

For Research Use Only

# GIPC2 Polyclonal antibody

Catalog Number: 12832-1-AP **1 Publications**



## Basic Information

Catalog Number:

12832-1-AP

Size:

750 µg/ml

Source:

Rabbit

Isotype:

IgG

Immunogen Catalog Number:

AG3566

GenBank Accession Number:

BC036075

GeneID (NCBI):

54810

UNIPROT ID:

Q8TF65

Full Name:

GIPC PDZ domain containing family, member 2

Calculated MW:

315 aa, 34 kDa

Observed MW:

34 kDa

Purification Method:

Antigen affinity purification

Recommended Dilutions:

WB 1:1000-1:5000

## Applications

Tested Applications:

WB, ELISA

Cited Applications:

WB

Species Specificity:

human, mouse, rat

Cited Species:

human

Positive Controls:

WB : HEK-293 cells, MKN-45 cells, T-47D cells, mouse colon tissue

## Background Information

### Notable Publications

Author	Pubmed ID	Journal	Application
Jingyuan Zhao	37212125	Epigenomics	WB

## Storage

Storage:

Store at -20°C. Stable for one year after shipment.

Storage Buffer:

PBS with 0.02% sodium azide and 50% glycerol pH 7.3.

Aliquoting is unnecessary for -20°C storage

For technical support and original validation data for this product please contact:

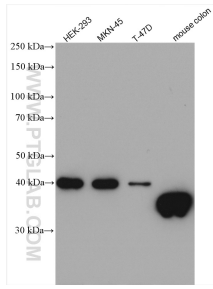
T: 4006900926

E: [Proteintech-CN@ptglab.com](mailto:Proteintech-CN@ptglab.com)

W: [ptgcn.com](http://ptgcn.com)

**This product is exclusively available under Proteintech Group brand and is not available to purchase from any other manufacturer.**

## Selected Validation Data



Various lysates were subjected to SDS PAGE followed by western blot with 12832-1-AP (GIPC2 antibody) at dilution of 1:2500 incubated at room temperature for 1.5 hours.