

Claudin 11 Polyclonal antibody

Catalog Number: 12152-1-AP

4 Publications

Basic Information

Catalog Number:

12152-1-AP

Size:

600 µg/ml

Source:

Rabbit

Isotype:

IgG

Immunogen Catalog Number:

AG2764

GenBank Accession Number:

BC013577

GeneID (NCBI):

5010

UNIPROT ID:

O75508

Full Name:

claudin 11

Calculated MW:

207 aa, 22 kDa

Observed MW:

22 kDa

Purification Method:

Antigen affinity purification

Recommended Dilutions:

WB 1:500-1:1000

IHC 1:20-1:200

IF 1:20-1:200

Applications

Tested Applications:

FC, IF/ICC, IHC, WB, ELISA

Cited Applications:

IF, WB

Species Specificity:

human, mouse

Cited Species:

human, rat

Note-IHC: suggested antigen retrieval with TE buffer pH 9.0; (*) Alternatively, antigen retrieval may be performed with citrate buffer pH 6.0

Positive Controls:

WB : human testis tissue,

IHC : human testis tissue, mouse brain tissue

IF : HepG2 cells,

Background Information

Claudins are a family of proteins that are the most important components of the tight junctions, where they establish the paracellular barrier that controls the flow of molecules in the intercellular space between the cells of an epithelium. 23 claudins have been identified. They are small (20-27 kilodalton (kDa)) proteins with very similar structure. They have four transmembrane domains, with the N-terminus and the C-terminus in the cytoplasm.

Notable Publications

Author	Pubmed ID	Journal	Application
Zhaoxing Li	30651572	Sci Rep	WB
Raimund Dietze	25666991	Mol Cell Endocrinol	IF
Liping Wang	35984620	J Physiol Biochem	WB

Storage

Storage:

Store at -20°C. Stable for one year after shipment.

Storage Buffer:

PBS with 0.02% sodium azide and 50% glycerol pH 7.3.

Aliquoting is unnecessary for -20°C storage

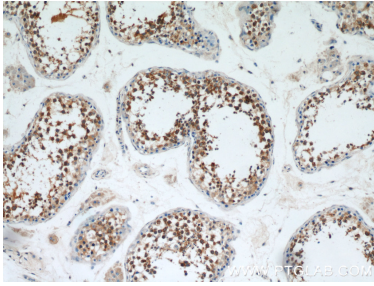
For technical support and original validation data for this product please contact:

T: 4006900926

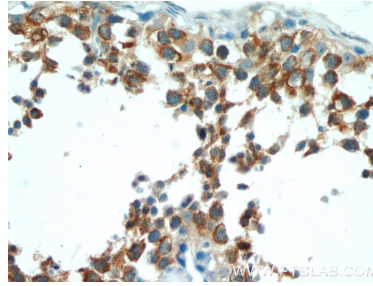
E: Proteintech-CN@ptglab.comW: ptgcn.com

This product is exclusively available under Proteintech Group brand and is not available to purchase from any other manufacturer.

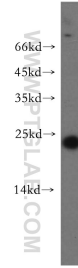
Selected Validation Data



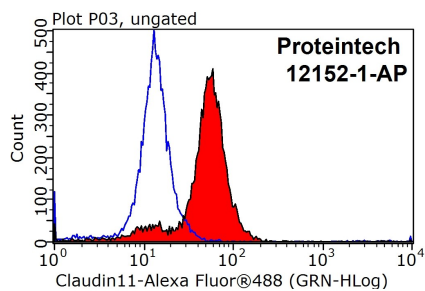
Immunohistochemical analysis of paraffin-embedded human testis using 12152-1-AP (Claudin 11 antibody) at dilution of 1:50 (under 10x lens).



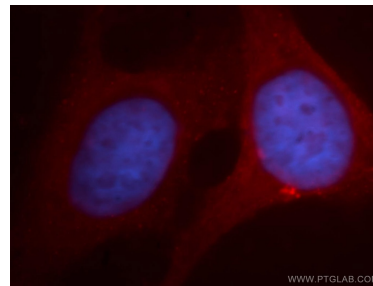
Immunohistochemical analysis of paraffin-embedded human testis using 12152-1-AP (Claudin 11 antibody) at dilution of 1:50 (under 40x lens).



human testis tissue were subjected to SDS PAGE followed by western blot with 12152-1-AP (Claudin 11 antibody) at dilution of 1:500 incubated at room temperature for 1.5 hours.



1X10⁶ HepG2 cells were stained with 0.2ug Claudin 11 antibody (12152-1-AP, red) and control antibody (blue). Fixed with 90% MeOH blocked with 3% BSA (30 min). Alexa Fluor 488-conjugated AffiniPure Goat Anti-Rabbit IgG(H+L) with dilution 1:1000.



Immunofluorescent analysis of HepG2 cells, using CLDN11 antibody 12152-1-AP at 1:100 dilution and PE-labeled goat anti-rabbit IgG(red). Blue pseudocolor = DAPI (fluorescent DNA dye).