

For Research Use Only

# DVL2 Polyclonal antibody

Catalog Number: 12037-1-AP

Featured Product

26 Publications



## Basic Information

### Catalog Number:

12037-1-AP

### Size:

1000 µg/ml

### Source:

Rabbit

### Isotype:

IgG

### Immunogen Catalog Number:

AG2666

### GenBank Accession Number:

BC014844

### GeneID (NCBI):

1856

### UNIPROT ID:

O14641

### Full Name:

dishevelled, dsh homolog 2  
(Drosophila)

### Calculated MW:

736 aa, 79 kDa

### Observed MW:

90-95 kDa

### Purification Method:

Antigen affinity purification

### Recommended Dilutions:

WB 1:2000-1:16000

IP 0.5-4.0 µg for 1.0-3.0 mg of total protein lysate

IHC 1:50-1:500

IF 1:200-1:800

## Applications

### Tested Applications:

IF/ICC, IHC, IP, WB, ELISA

### Cited Applications:

WB, IP, IF, IHC, CoIP

### Species Specificity:

human, mouse, rat

### Cited Species:

human, rat, mouse, pig, Xenopus

**Note-IHC: suggested antigen retrieval with TE buffer pH 9.0; (\*) Alternatively, antigen retrieval may be performed with citrate buffer pH 6.0**

### Positive Controls:

**WB**: HEK-293 cells, mouse thymus tissue, MCF-7 cells, MDA-MB-453s cells, HepG2 cells, MDA-MB-231 cells, NIH/3T3 cells

**IP**: MCF-7 cells,

**IHC**: human lung cancer tissue, human gliomas tissue, human prostate cancer tissue, mouse colon tissue, rat colon tissue

**IF**: HCT 116 cells, HepG2 cells

## Background Information

DVL2 is member of the dishevelled (dsh) protein family. DVL2 encodes a 90-kD protein that undergoes posttranslational phosphorylation to form a 95-kD cytoplasmic protein in a variety of cell lines and species. DVL2 participates in Wnt signaling by binding to the cytoplasmic C-terminus of frizzled family members and transducing the Wnt signal to down-stream effectors. It promotes internalization and degradation of frizzled proteins upon Wnt signaling. It plays a role both in canonical and non-canonical Wnt signaling. It also Plays a role in the signal transduction pathways mediated by multiple Wnt genes.

## Notable Publications

Author	Pubmed ID	Journal	Application
Zhen-Yu Shi	29039446	Int J Mol Med	WB
Mélinée Futel	30171710	J Cell Biochem	WB,IF
Xiaolong Zhang	35998547	Biochem Biophys Res Commun	WB

## Storage

### Storage:

Store at -20°C. Stable for one year after shipment.

### Storage Buffer:

PBS with 0.02% sodium azide and 50% glycerol pH 7.3.

Aliquoting is unnecessary for -20°C storage

For technical support and original validation data for this product please contact:

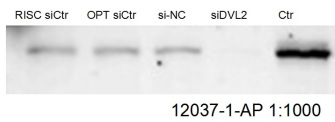
T: 4006900926

E: Proteintech-CN@ptglab.com

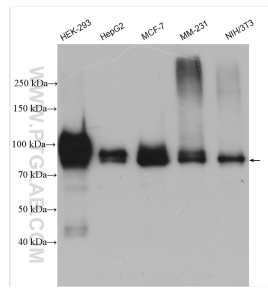
W: ptgcn.com

**This product is exclusively available under Proteintech Group brand and is not available to purchase from any other manufacturer.**

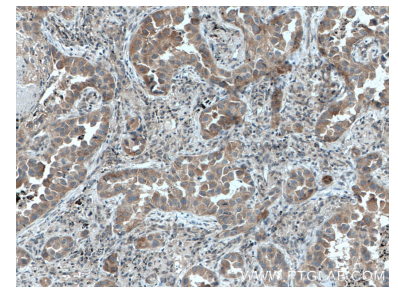
## Selected Validation Data



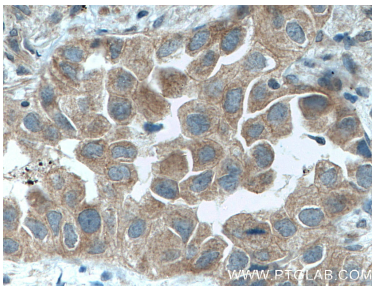
WB result of DVL2 antibody (12037-1-AP, 1:1000) with siDVL2 and si-control transfected cells.



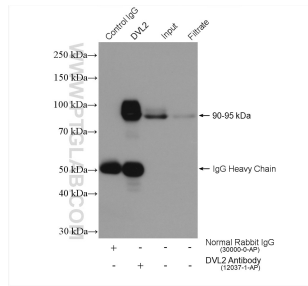
Various lysates were subjected to SDS PAGE followed by western blot with 12037-1-AP (DVL2 antibody) at dilution of 1:8000 incubated at room temperature for 1.5 hours.



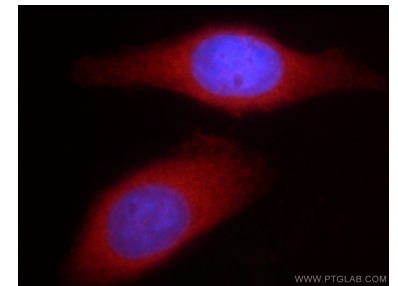
Immunohistochemical analysis of paraffin-embedded human lung cancer tissue slide using 12037-1-AP (DVL2 antibody) at dilution of 1:200 (under 10x lens. Heat mediated antigen retrieval with Tris-EDTA buffer (pH 9.0).



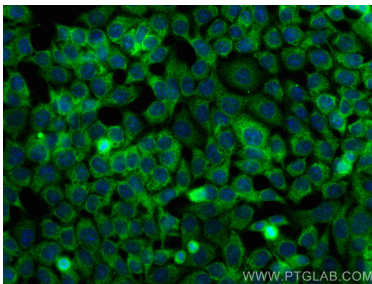
Immunohistochemical analysis of paraffin-embedded human lung cancer tissue slide using 12037-1-AP (DVL2 antibody) at dilution of 1:200 (under 40x lens. Heat mediated antigen retrieval with Tris-EDTA buffer (pH 9.0).



IP result of anti-DVL2 (IP:12037-1-AP, 4ug; Detection:12037-1-AP 1:4000) with MCF-7 cells lysate 640 ug.



Immunofluorescent analysis of HepG2 cells using 12037-1-AP (DVL2 antibody) at dilution of 1:50 and Rhodamine-Goat anti-Rabbit IgG.



Immunofluorescent analysis of (-20°C Ethanol) fixed HCT 116 cells using DVL2 antibody (12037-1-AP) at dilution of 1:400 and CoraLite®488-Conjugated AffiniPure Goat Anti-Rabbit IgG(H+L).