

Cyclin E2 Polyclonal antibody

Catalog Number: 11935-1-AP

40 Publications

Basic Information

Catalog Number:

11935-1-AP

Size:

133 µg/ml

Source:

Rabbit

Isotype:

IgG

Immunogen Catalog Number:

AG2532

GenBank Accession Number:

BC020729

GeneID (NCBI):

9134

UNIPROT ID:

O96020

Full Name:

cyclin E2

Calculated MW:

374 aa, 44 kDa

Observed MW:

44 kDa

Purification Method:

Antigen affinity purification

Recommended Dilutions:

IP 0.5-4.0 µg for 1.0-3.0 mg of total protein lysate

IHC 1:400-1:1600

IF 1:200-1:800

Applications

Tested Applications:

FC, IF/ICC, IHC, IP, ELISA

Cited Applications:

IHC, WB

Species Specificity:

human, mouse

Cited Species:

human, rat

Note-IHC: suggested antigen retrieval with TE buffer pH 9.0; (*) Alternatively, antigen retrieval may be performed with citrate buffer pH 6.0

Positive Controls:

IP: Jurkat cells,

IHC: human breast cancer tissue, mouse testis tissue

IF: HeLa cells,

Background Information

Cyclin E2 (CCNE2) belongs to the highly conserved cyclin family, whose members are characterized by a dramatic periodicity in protein abundance throughout the cell cycle. Cyclins function as regulators of cyclin-dependent kinases (CDKs). Different cyclins exhibit distinct expression and degradation patterns which contribute to the temporal coordination of cell cycle events. CCNE2 forms a complex with and functions as a regulatory subunit of CDK2 and has been shown to specifically interact with CIP/KIP family of CDK inhibitors. CCNE2 plays a role in cell cycle G1/S transition and its expression peaks at the G1-S phase. Whereas cyclin E1 is expressed in most proliferating normal and tumor cells, cyclin E2 levels are low or undetectable in nontransformed cells, and are elevated in tumor-derived cells.

Notable Publications

Author	Pubmed ID	Journal	Application
Mengling Liu	36130926	Oncogenesis	IHC, WB
Cheng-Lung Hsu	30236142	J Exp Clin Cancer Res	WB
Jing-Hua Pan	30191976	J Cell Physiol	WB

Storage

Storage:

Store at -20°C. Stable for one year after shipment.

Storage Buffer:

PBS with 0.02% sodium azide and 50% glycerol pH 7.3.

Aliquoting is unnecessary for -20°C storage

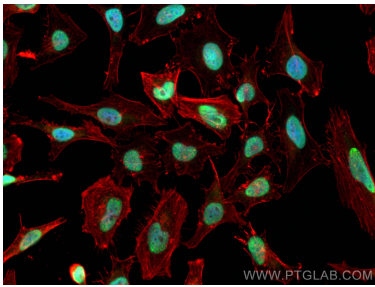
For technical support and original validation data for this product please contact:

T: 4006900926

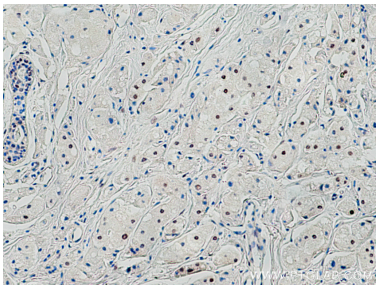
E: Proteintech-CN@ptglab.comW: ptgcn.com

This product is exclusively available under Proteintech Group brand and is not available to purchase from any other manufacturer.

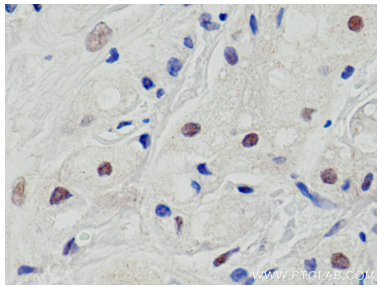
Selected Validation Data



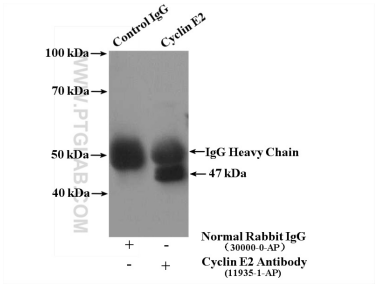
Immunofluorescent analysis of (4% PFA) fixed HeLa cells using Cyclin E2 antibody (11935-1-AP) at dilution of 1:400 and CoraLite®488-Conjugated AffiniPure Goat Anti-Rabbit IgG(H+L), CL594-Phalloidin (red).



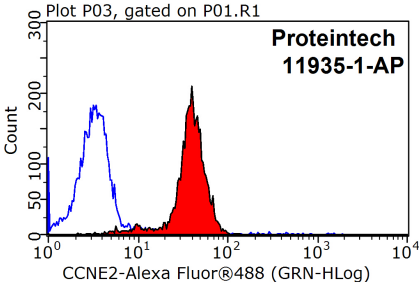
Immunohistochemical analysis of paraffin-embedded human breast cancer tissue slide using 11935-1-AP (Cyclin E2 antibody) at dilution of 1:800 (under 10x lens). Heat mediated antigen retrieval with Tris-EDTA buffer (pH 9.0).



Immunohistochemical analysis of paraffin-embedded human breast cancer tissue slide using 11935-1-AP (Cyclin E2 antibody) at dilution of 1:800 (under 40x lens). Heat mediated antigen retrieval with Tris-EDTA buffer (pH 9.0).



IP result of anti-Cyclin E2 (IP:11935-1-AP, 4ug; Detection:11935-1-AP 1:300) with Jurkat cells lysate 4000ug.



1X10⁶ HeLa cells were stained with 0.2ug Cyclin E2 antibody (11935-1-AP, red) and control antibody (blue). Fixed with 90% MeOH blocked with 3% BSA (30 min). Alexa Fluor 488-conjugated AffiniPure Goat Anti-Rabbit IgG(H+L) with dilution 1:1500.