

## COX6C Polyclonal antibody

Catalog Number: 11429-2-AP

1 Publications

## Basic Information

## Catalog Number:

11429-2-AP

## Size:

240 µg/ml

## Source:

Rabbit

## Isotype:

IgG

## Immunogen Catalog Number:

AG1982

## GenBank Accession Number:

BC000187

## GeneID (NCBI):

1345

## UNIPROT ID:

P09669

## Full Name:

cytochrome c oxidase subunit VIc

## Calculated MW:

75 aa, 9 kDa

## Observed MW:

9 kDa

## Purification Method:

Antigen affinity purification

## Recommended Dilutions:

WB 1:500-1:1000

IHC 1:20-1:200

## Applications

## Tested Applications:

IHC, WB, ELISA

## Cited Applications:

WB

## Species Specificity:

human, mouse, rat

## Cited Species:

human

**Note-IHC: suggested antigen retrieval with TE buffer pH 9.0; (\*) Alternatively, antigen retrieval may be performed with citrate buffer pH 6.0**

## Positive Controls:

WB : human heart tissue,

IHC : human pancreas cancer tissue,

## Background Information

Cytochrome c oxidase (COX) is the terminal oxidase in the respiratory chain in human and other mammalian cells. The enzyme is composed of 13 different subunits. COX6C (Cytochrome c oxidase subunit 6C) is one of the nuclear-coded polypeptide chains of cytochrome c oxidase, the terminal oxidase in mitochondrial electron transport.

## Notable Publications

Author	Pubmed ID	Journal	Application
Oliva Claudia R CR	20870728	J Biol Chem	WB

## Storage

## Storage:

Store at -20°C. Stable for one year after shipment.

## Storage Buffer:

PBS with 0.02% sodium azide and 50% glycerol pH 7.3.

Aliquoting is unnecessary for -20°C storage

For technical support and original validation data for this product please contact:

T: 4006900926

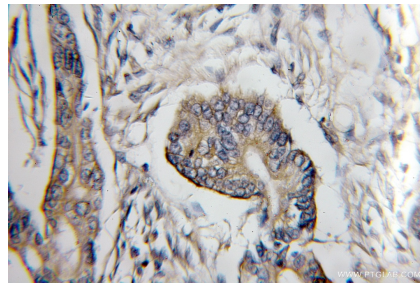
E: [Proteintech-CN@ptglab.com](mailto:Proteintech-CN@ptglab.com)W: [ptgcn.com](http://ptgcn.com)

This product is exclusively available under Proteintech Group brand and is not available to purchase from any other manufacturer.

## Selected Validation Data



human heart tissue were subjected to SDS PAGE followed by western blot with 11429-2-AP (COX6C antibody) at dilution of 1:400 incubated at room temperature for 1.5 hours.



Immunohistochemical analysis of paraffin-embedded human pancreas cancer using 11429-2-AP (COX6C antibody) at dilution of 1:50 (under 10x lens).