

For Research Use Only

EIF3E Polyclonal antibody

Catalog Number: 11352-1-AP



Basic Information

Catalog Number:

11352-1-AP

Size:

300 µg/ml

Source:

Rabbit

Isotype:

IgG

Immunogen Catalog Number:

AG1856

GenBank Accession Number:

BC000734

GeneID (NCBI):

3646

UNIPROT ID:

P60228

Full Name:

eukaryotic translation initiation factor 3, subunit E

Calculated MW:

48 kDa

Observed MW:

48-52 kDa

Purification Method:

Antigen affinity purification

Recommended Dilutions:

WB 1:500-1:2400

IP 0.5-4.0 µg for 1.0-3.0 mg of total protein lysate

IHC 1:50-1:500

IF 1:10-1:100

Applications

Tested Applications:

IF/ICC, IHC, IP, WB, ELISA

Species Specificity:

human, mouse, rat

Note-IHC: suggested antigen retrieval with TE buffer pH 9.0; (*) Alternatively, antigen retrieval may be performed with citrate buffer pH 6.0

Positive Controls:

WB : HeLa cells, HEK-293 cells, HepG2 cells, Jurkat cells

IP : HepG2 cells,

IHC : human breast cancer tissue,

IF : HepG2 cells,

Background Information

Storage

Storage:

Store at -20°C. Stable for one year after shipment.

Storage Buffer:

PBS with 0.02% sodium azide and 50% glycerol pH 7.3.

Aliquoting is unnecessary for -20°C storage

For technical support and original validation data for this product please contact:

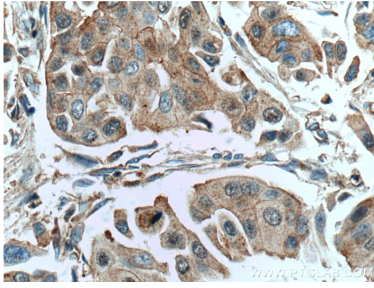
T: 4006900926

E: Proteintech-CN@ptglab.com

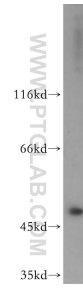
W: ptgcn.com

This product is exclusively available under Proteintech Group brand and is not available to purchase from any other manufacturer.

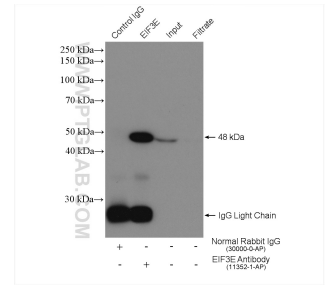
Selected Validation Data



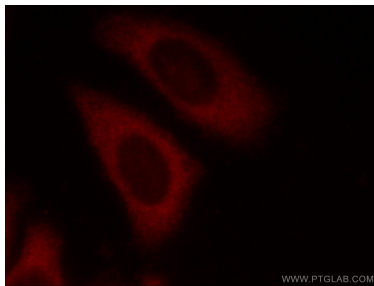
Immunohistochemical analysis of paraffin-embedded human breast cancer tissue slide using 11352-1-AP (EIF3E antibody) at dilution of 1:200 (under 40x lens. Heat mediated antigen retrieval with Tris-EDTA buffer (pH 9.0)).



HeLa cells were subjected to SDS PAGE followed by western blot with 11352-1-AP (EIF3E antibody) at dilution of 1:500 incubated at room temperature for 1.5 hours.



IP result of anti-EIF3E (IP:11352-1-AP, 4ug; Detection:11352-1-AP 1:500) with HepG2 cells lysate 880 ug.



Immunofluorescent analysis of HepG2 cells using 11352-1-AP (EIF3E antibody) at dilution of 1:25 and Rhodamine-Goat anti-Rabbit IgG.