

# ECHS1 Polyclonal antibody

Catalog Number: 11305-1-AP

Featured Product

22 Publications

## Basic Information

## Catalog Number:

11305-1-AP

## Size:

400 µg/ml

## Source:

Rabbit

## Isotype:

IgG

## Immunogen Catalog Number:

AG1842

## GenBank Accession Number:

BC008906

## GeneID (NCBI):

1892

## UNIPROT ID:

P30084

## Full Name:

enoyl Coenzyme A hydratase, short chain, 1, mitochondrial

## Calculated MW:

31 kDa

## Observed MW:

29-31 kDa

## Purification Method:

Antigen affinity purification

## Recommended Dilutions:

WB 1:2000-1:12000

IP 0.5-4.0 µg for 1.0-3.0 mg of total protein lysate

IHC 1:20-1:200

IF 1:200-1:800

## Applications

## Tested Applications:

IF/ICC, IHC, IP, WB, ELISA

## Cited Applications:

IF, IHC, WB

## Species Specificity:

human, mouse, rat

## Cited Species:

human, rat, mouse

**Note-IHC: suggested antigen retrieval with TE buffer pH 9.0; (\*) Alternatively, antigen retrieval may be performed with citrate buffer pH 6.0**

## Positive Controls:

WB : HepG2 cells, HeLa cells, mouse heart, mouse liver, rat liver

IP : PC-3 cells,

IHC : human prostate cancer tissue, human liver tissue

IF : HeLa cells,

## Background Information

Enoyl-coenzyme A hydratase (ECHS1) is a mitochondrial protein which catalyzes the hydration of 2-trans-enoyl-coenzyme A intermediates to L-3-hydroxyacyl-coenzyme A, playing key role in metabolism of fatty acids in mitochondria. ECHS1 is highly expressed in muscle, liver and fibroblasts. Altered expression of ECHS1 has been considered as a characteristic feature of mitochondria dysfunction. (23275097, 23235493)

## Notable Publications

Author	Pubmed ID	Journal	Application
Lanaspa Miguel A MA	23152807	PLoS One	WB
Ching-Chou Tsai	32450865	Lipids Health Dis	WB
Bi-Yun Lin	25760819	Mol Med Rep	

## Storage

## Storage:

Store at -20°C. Stable for one year after shipment.

## Storage Buffer:

PBS with 0.02% sodium azide and 50% glycerol pH 7.3.

Aliquoting is unnecessary for -20°C storage

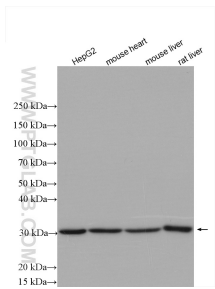
For technical support and original validation data for this product please contact:

T: 4006900926

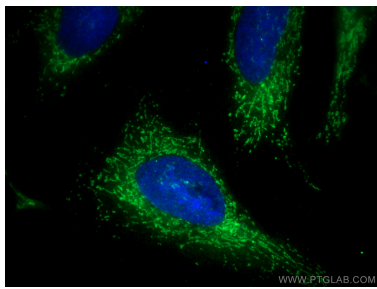
E: [Proteintech-CN@ptglab.com](mailto:Proteintech-CN@ptglab.com)W: [ptgcn.com](http://ptgcn.com)

**This product is exclusively available under Proteintech Group brand and is not available to purchase from any other manufacturer.**

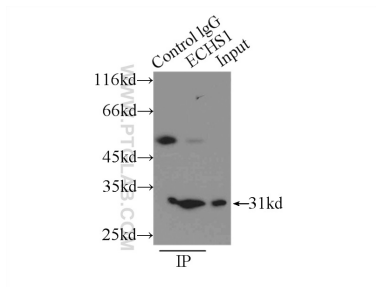
Selected Validation Data



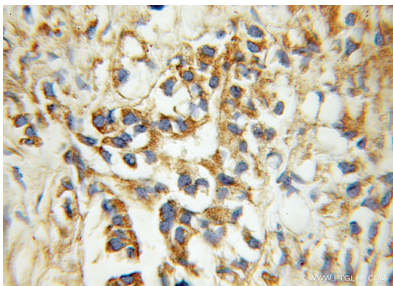
Various lysates were subjected to SDS PAGE followed by western blot with 11305-1-AP (ECHS1 antibody) at dilution of 1:6000 incubated at room temperature for 1.5 hours.



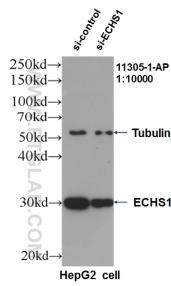
Immunofluorescent analysis of (-20°C Methanol) fixed HeLa cells using ECHS1 antibody (11305-1-AP) at dilution of 1:400 and CoraLite®488-Conjugated AffiniPure Goat Anti-Rabbit IgG(H+L).



IP result of anti-ECHS1 (IP:11305-1-AP, 3ug; Detection:11305-1-AP 1:500) with PC-3 cells lysate 3000ug.



Immunohistochemical analysis of paraffin-embedded human prostate cancer using 11305-1-AP (ECHS1 antibody) at dilution of 1:100 (under 10x lens).



WB result of ECHS1 antibody (11305-1-AP, 1:1200) with si-Control and si-ECHS1 transfected HepG2 cells. .