

For Research Use Only

EIF3E Polyclonal antibody

Catalog Number: 10899-1-AP **2 Publications**



Basic Information

Catalog Number:

10899-1-AP

Size:

350 µg/ml

Source:

Rabbit

Isotype:

IgG

Immunogen Catalog Number:

AG1132

GenBank Accession Number:

BC008419

GeneID (NCBI):

3646

UNIPROT ID:

P60228

Full Name:

eukaryotic translation initiation

factor 3, subunit E

Calculated MW:

445 aa, 52 kDa

Observed MW:

48-52 kDa

Purification Method:

Antigen affinity purification

Recommended Dilutions:

WB 1:500-1:1000

IP 0.5-4.0 µg for 1.0-3.0 mg of total

protein lysate

IHC 1:20-1:200

IF 1:50-1:500

Applications

Tested Applications:

IF/ICC, IHC, IP, WB, ELISA

Cited Applications:

IF, IHC, WB

Species Specificity:

human, mouse, rat

Cited Species:

human

Positive Controls:

WB: rat lymph tissue, HeLa cells, mouse thymus tissue, mouse pancreas tissue, Jurkat cells

IP: Jurkat cells,

IHC: human pancreas cancer tissue,

IF: U2OS cells, SH-SY5Y cells

Note-IHC: suggested antigen retrieval with TE buffer pH 9.0; (*) Alternatively, antigen retrieval may be performed with citrate buffer pH 6.0

Background Information

Notable Publications

Author	Pubmed ID	Journal	Application
MOHAMED E. M. SAEED	36316038	Cancer Genomics Proteomics	IHC
Yang You	35567427	Aging Cell	WB,IF

Storage

Storage:

Store at -20°C. Stable for one year after shipment.

Storage Buffer:

PBS with 0.02% sodium azide and 50% glycerol pH 7.3.

Aliquoting is unnecessary for -20°C storage

For technical support and original validation data for this product please contact:

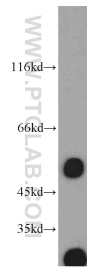
T: 4006900926

E: Proteintech-CN@ptglab.com

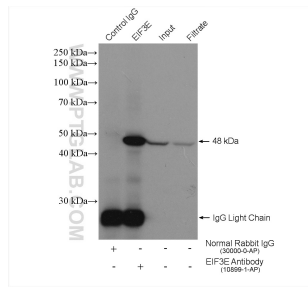
W: ptgcn.com

This product is exclusively available under Proteintech Group brand and is not available to purchase from any other manufacturer.

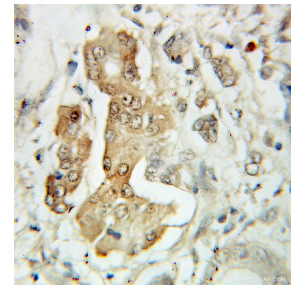
Selected Validation Data



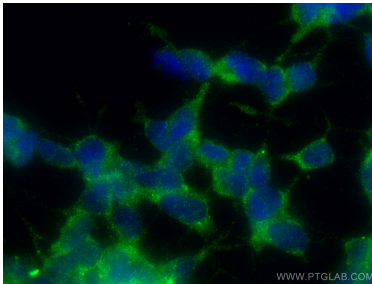
rat lymph tissue were subjected to SDS PAGE followed by western blot with 10899-1-AP (EIF3E antibody) at dilution of 1:100 incubated at room temperature for 1.5 hours.



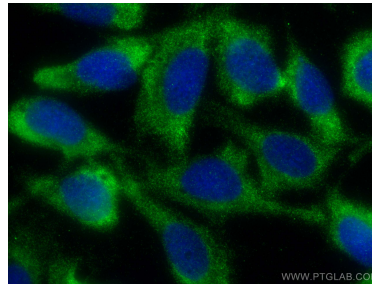
IP result of anti-EIF3E (IP:10899-1-AP, 4 μ g; Detection:10899-1-AP 1:500) with Jurkat cells lysate 2440 μ g.



Immunohistochemical analysis of paraffin-embedded human pancreas cancer using 10899-1-AP (EIF3E antibody) at dilution of 1:100 (under 10x lens).



Immunofluorescent analysis of (-20°C Ethanol) fixed SH-SY5Y cells using EIF3E antibody (10899-1-AP) at dilution of 1:200 and CoraLite®488-Conjugated AffiniPure Goat Anti-Rabbit IgG(H+L).



Immunofluorescent analysis of (-20°C Ethanol) fixed U2OS cells using EIF3E antibody (10899-1-AP) at dilution of 1:200 and CoraLite®488-Conjugated AffiniPure Goat Anti-Rabbit IgG(H+L).