

For Research Use Only

# SMARCE1 Polyclonal antibody

Catalog Number: 10814-1-AP **1 Publications**



## Basic Information

<b>Catalog Number:</b> 10814-1-AP	<b>GenBank Accession Number:</b> BC007082	<b>Purification Method:</b> Antigen affinity purification
<b>Size:</b> 900 µg/ml	<b>GeneID (NCBI):</b> 6605	<b>Recommended Dilutions:</b> WB 1:500-1:2000
<b>Source:</b> Rabbit	<b>UNIPROT ID:</b> Q969G3	IP 0.5-4.0 µg for 1.0-3.0 mg of total protein lysate
<b>Isotype:</b> IgG	<b>Full Name:</b> SWI/SNF related, matrix associated, actin dependent regulator of chromatin, subfamily e, member 1	IHC 1:50-1:500
<b>Immunogen Catalog Number:</b> AG1161	<b>Calculated MW:</b> 47 kDa	
	<b>Observed MW:</b> 50-55 kDa	

## Applications

<b>Tested Applications:</b> IHC, IP, WB, ELISA	<b>Positive Controls:</b> WB: Jurkat cells, HEK-293 cells, HeLa cells, MCF-7 cells
<b>Cited Applications:</b> WB	IP: HEK-293 cells,
<b>Species Specificity:</b> human	IHC: human prostate cancer tissue,
<b>Cited Species:</b> mouse	

**Note-IHC: suggested antigen retrieval with TE buffer pH 9.0; (\*) Alternatively, antigen retrieval may be performed with citrate buffer pH 6.0**

## Background Information

Via antagonizing chromatin-mediated transcriptional repression, the SWI/SNF complex in *S. cerevisiae* and *Drosophila* is thought to facilitate transcriptional activation of specific genes. The BRG1/brm-associated factors, or SMARCE1, complex in mammals is functionally related to SWI/SNF and consists of 9 to 12 subunits, some of which are homologous to SWI/SNF subunits. It contains a DNA-binding HMG domain and performs multiple biological functions, including DNA-, protein- and chromatin-binding, transcription coactivating activity, chromatin modification, DNA-dependent negative regulation of transcription, regulation of transcription of the RNA polymerase II promoter. In addition, SMARCE1, as an ER (estrogen receptor) subtype-selective modulator, regulates ER mediated transcription in a ligand-dependent manner and also directly binds to AR (androgen receptor) to alter its activity. The calculated molecular weight of SMARCE1 is 47 kDa, but modified SMARCE1 is about 55 kDa.

## Notable Publications

Author	Pubmed ID	Journal	Application
Kai Song	37810250	iScience	WB

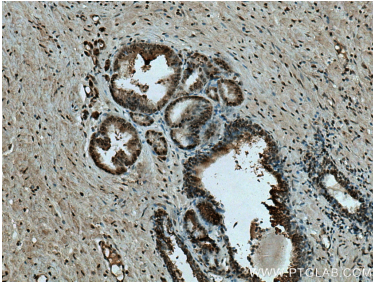
## Storage

**Storage:**  
Store at -20°C. Stable for one year after shipment.  
**Storage Buffer:**  
PBS with 0.02% sodium azide and 50% glycerol pH 7.3.  
Aliquoting is unnecessary for -20°C storage

For technical support and original validation data for this product please contact:  
T: 4006900926 E: Proteintech-CN@ptglab.com W: ptgcn.com

**This product is exclusively available under Proteintech Group brand and is not available to purchase from any other manufacturer.**

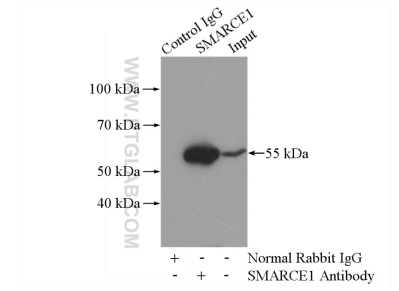
## Selected Validation Data



Immunohistochemical analysis of paraffin-embedded human prostate cancer tissue slide using 10814-1-AP (SMARCE1 antibody) at dilution of 1:200 (under 10x lens). Heat mediated antigen retrieval with Tris-EDTA buffer (pH 9.0).



Jurkat cells were subjected to SDS PAGE followed by western blot with 10814-1-AP (SMARCE1 antibody) at dilution of 1:1000 incubated at room temperature for 1.5 hours.



IP result of anti-SMARCE1 (IP:10814-1-AP, 4ug; Detection:10814-1-AP 1:800) with HEK-293 cells lysate 880ug.