

For Research Use Only

# COTL1 Polyclonal antibody

Catalog Number: 10781-1-AP

Featured Product

8 Publications



## Basic Information

**Catalog Number:**

10781-1-AP

**Size:**

650 µg/ml

**Source:**

Rabbit

**Isotype:**

IgG

**Immunogen Catalog Number:**

AG1230

**GenBank Accession Number:**

BC010884

**GeneID (NCBI):**

23406

**UNIPROT ID:**

Q14019

**Full Name:**

coactosin-like 1 (Dictyostelium)

**Calculated MW:**

16 kDa

**Observed MW:**

16 kDa

**Purification Method:**

Antigen affinity purification

**Recommended Dilutions:**

WB 1:2000-1:16000

IP 0.5-4.0 µg for 1.0-3.0 mg of total protein lysate

IHC 1:50-1:500

## Applications

**Tested Applications:**

IHC, IP, WB, ELISA

**Cited Applications:**

WB, IF, IHC

**Species Specificity:**

human, mouse, rat

**Cited Species:**

human, mouse

**Note-IHC: suggested antigen retrieval with TE buffer pH 9.0; (\*) Alternatively, antigen retrieval may be performed with citrate buffer pH 6.0**

**Positive Controls:**

**WB:** A549 cells, HeLa cells, mouse brain tissue, rat brain tissue

**IP:** mouse kidney tissue,

**IHC:** human lung cancer tissue,

## Background Information

COTL1, also named as CLP, binds to F-actin in a calcium-independent manner. And it has no direct effect on actin depolymerization.

## Notable Publications

Author	Pubmed ID	Journal	Application
Shanqi Guo	27893417	Oncotarget	WB
Bei Wang	35873386	J Inflamm Res	IHC
Alexandra Ruth Glathar	36672394	Cancers (Basel)	WB,IHC,IF

## Storage

**Storage:**

Store at -20°C. Stable for one year after shipment.

**Storage Buffer:**

PBS with 0.02% sodium azide and 50% glycerol pH 7.3.

Aliquoting is unnecessary for -20°C storage

For technical support and original validation data for this product please contact:

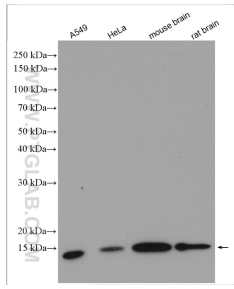
T: 4006900926

E: Proteintech-CN@ptglab.com

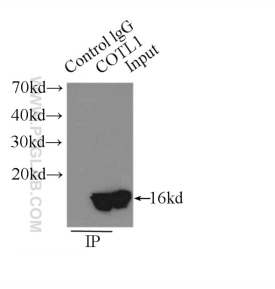
W: ptgcn.com

**This product is exclusively available under Proteintech Group brand and is not available to purchase from any other manufacturer.**

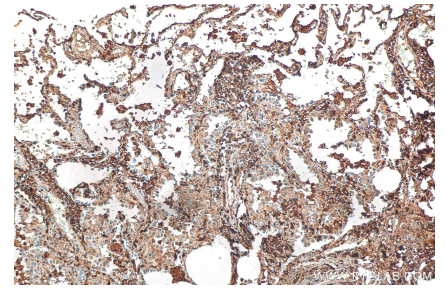
## Selected Validation Data



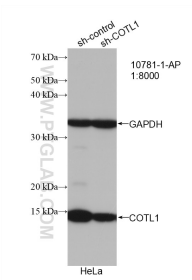
Various lysates were subjected to SDS PAGE followed by western blot with 10781-1-AP (COTL1 antibody) at dilution of 1:8000 incubated at room temperature for 1.5 hours.



IP result of anti-COTL1 (IP:10781-1-AP, 3ug; Detection:10781-1-AP 1:3000) with mouse kidney tissue lysate 12500ug.



Immunohistochemical analysis of paraffin-embedded human lung cancer tissue slide using 10781-1-AP (COTL1 antibody) at dilution of 1:200 (under 10x lens). Heat mediated antigen retrieval with Tris-EDTA buffer (pH 9.0).



WB result of COTL1 antibody (10781-1-AP; 1:8000; incubated at room temperature for 1.5 hours) with sh-Control and sh-COTL1 transfected HeLa cells.