

For Research Use Only

# VCP Polyclonal antibody

Catalog Number: 10736-1-AP

Featured Product

53 Publications



## Basic Information

### Catalog Number:

10736-1-AP

### Source:

Rabbit

### Isotype:

IgG

### Immunogen Catalog Number:

AG1002

### GenBank Accession Number:

BC007562

### GeneID (NCBI):

7415

### UNIPROT ID:

P55072

### Full Name:

valosin-containing protein

### Calculated MW:

89 kDa

### Observed MW:

90-100 kDa

### Purification Method:

Antigen affinity purification

### Recommended Dilutions:

WB: 1:2000-1:16000

IP: 0.5-4.0 ug for 1.0-3.0 mg of total protein lysate

IHC: 1:100-1:400

## Applications

### Tested Applications:

WB, IP, IHC, ELISA

### Cited Applications:

WB, IHC, IF, CoIP

### Species Specificity:

human, mouse, rat

### Cited Species:

human, mouse, rat, pig

**Note-IHC: suggested antigen retrieval with TE buffer pH 9.0; (\*) Alternatively, antigen retrieval may be performed with citrate buffer pH 6.0**

### Positive Controls:

**WB** : HeLa cells, human brain tissue, rat lung tissue, mouse lung tissue, U2OS cells, C6 cells, mouse thymus tissue, mouse brain tissue, rat brain tissue, SH-SY5Y cells, NIH/3T3 cells

**IP** : HeLa cells, mouse brain tissue

**IHC** : human gliomas tissue, human colon cancer tissue, human lung cancer tissue

## Background Information

VCP (Valosin-containing protein), also known as TER ATPase and 15S Mg<sup>2+</sup>-ATPase p97 subunit, belongs to the AAA ATPase family. VCP was first identified as a result of attempts to clone a putative peptide hormone called valosin. It was found that the cloned cDNA encoded a ubiquitously expressed 90 kDa cytosolic protein, termed VCP, which showed none of the characteristics of a peptide hormone precursor (PMID:1382975). Defects in VCP are the cause of inclusion body myopathy with early-onset Paget disease and frontotemporal dementia (IBMPFD) and amyotrophic lateral sclerosis type 14 with or without frontotemporal dementia (ALS14). VCP has a calculated molecular weight of 89 kDa and an apparent molecular weight of 90-100 kDa (PMID: 15732117, 1382975).

## Notable Publications

Author	Pubmed ID	Journal	Application
Nitchakarn Kaokhum	36182100	Mol Cell Proteomics	WB
Fan Zhang	34597680	Exp Cell Res	WB
Yang Wang	34560900	J Exp Clin Cancer Res	WB

## Storage

### Storage:

Store at -20°C. Stable for one year after shipment.

### Storage Buffer:

PBS with 0.02% sodium azide and 50% glycerol, pH7.3

Aliquoting is unnecessary for -20°C storage

For technical support and original validation data for this product please contact:

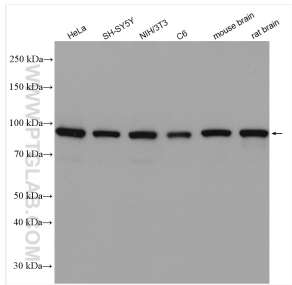
T: 4006900926

E: [Proteintech-CN@ptglab.com](mailto:Proteintech-CN@ptglab.com)

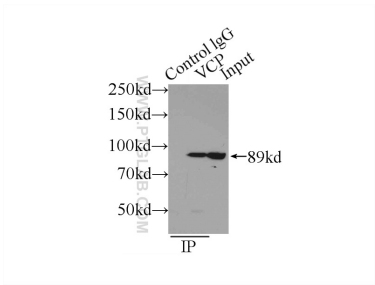
W: [ptgcn.com](http://ptgcn.com)

**This product is exclusively available under Proteintech Group brand and is not available to purchase from any other manufacturer.**

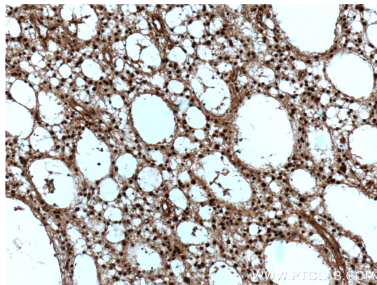
Selected Validation Data



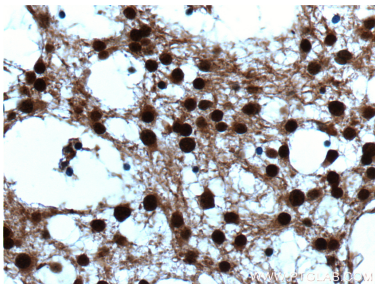
Various lysates were subjected to SDS PAGE followed by western blot with 10736-1-AP (VCP antibody) at dilution of 1:8000 incubated at room temperature for 1.5 hours.



IP result of anti-VCP (IP:10736-1-AP, 4ug; Detection:10736-1-AP 1:1000) with HeLa cells lysate 1505ug.



Immunohistochemical analysis of paraffin-embedded human gliomas tissue slide using 10736-1-AP (VCP Antibody) at dilution of 1:200 (under 10x lens).



Immunohistochemical analysis of paraffin-embedded human gliomas tissue slide using 10736-1-AP (VCP Antibody) at dilution of 1:200 (under 40x lens).