

For Research Use Only

AHCYL1 Polyclonal antibody

Catalog Number: 10658-3-AP

Featured Product

20 Publications



Basic Information

Catalog Number:

10658-3-AP

Size:

500 µg/ml

Source:

Rabbit

Isotype:

IgG

Immunogen Catalog Number:

AG1017

GenBank Accession Number:

BC007576

GeneID (NCBI):

10768

UNIPROT ID:

O43865

Full Name:

S-adenosylhomocysteine hydrolase-like 1

Calculated MW:

65 kDa

Observed MW:

60 kDa

Purification Method:

Antigen affinity purification

Recommended Dilutions:

WB 1:500-1:2000

IP 0.5-4.0 µg for 1.0-3.0 mg of total protein lysate

IHC 1:100-1:400

IF 1:200-1:800

Applications

Tested Applications:

IF/ICC, IHC, IP, WB, ELISA

Cited Applications:

WB, IP, IHC

Species Specificity:

human, mouse, rat

Cited Species:

human, chicken, rat, mouse, pig

Note-IHC: suggested antigen retrieval with TE buffer pH 9.0; (*) Alternatively, antigen retrieval may be performed with citrate buffer pH 6.0

Positive Controls:

WB: Jurkat cells, HeLa cells, mouse thymus tissue

IP: HeLa cells,

IHC: human liver cancer tissue,

IF: HeLa cells,

Background Information

S-adenosylhomocysteine hydrolase-like protein 1 (AHCYL1), also known as IP3 receptor-binding protein released with IP3 (IRBIT), regulates IP3-induced Ca²⁺ release into the cytoplasm of cells (PMID:23145124). This protein is also named as DCAL, XPVKONA and belongs to the adenosylhomocysteinase family. AHCYL1 mRNA and protein are most abundant in the glandular epithelium of adenocarcinoma of cancerous, but not normal and AHCYL1 protein is predominantly in the nucleus (PMID:22826361). It has 2 isoforms produced by alternative splicing.

Notable Publications

Author	Pubmed ID	Journal	Application
Yimin Jia	27648945	J Agric Food Chem	WB
Demin Cai	27763549	Nutrients	WB
Xinwei Liu	33039524	Neuroscience	WB,IP

Storage

Storage:

Store at -20°C. Stable for one year after shipment.

Storage Buffer:

PBS with 0.02% sodium azide and 50% glycerol pH 7.3.

Aliquoting is unnecessary for -20°C storage

For technical support and original validation data for this product please contact:

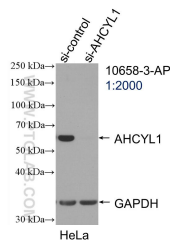
T: 4006900926

E: Proteintech-CN@ptglab.com

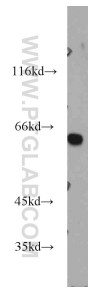
W: ptgcn.com

This product is exclusively available under Proteintech Group brand and is not available to purchase from any other manufacturer.

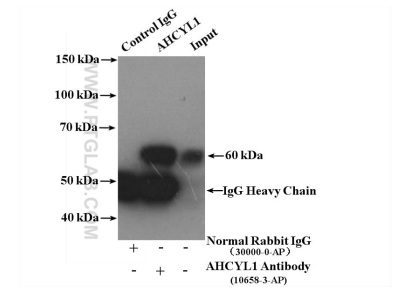
Selected Validation Data



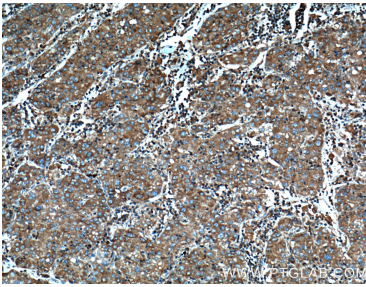
WB result of AHCYL1 antibody (10658-3-AP; 1:2000; incubated at room temperature for 1.5 hours) with sh-Control and sh-AHCYL1 transfected HeLa cells.



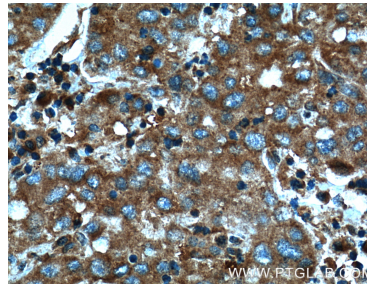
Jurkat cells were subjected to SDS PAGE followed by western blot with 10658-3-AP (AHCYL1 antibody) at dilution of 1:1000 incubated at room temperature for 1.5 hours.



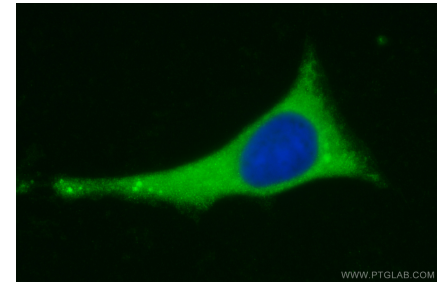
IP result of anti-AHCYL1 (IP:10658-3-AP, 4ug; Detection:10658-3-AP 1:1000) with HeLa cells lysate 2400ug.



Immunohistochemical analysis of paraffin-embedded human liver cancer tissue slide using 10658-3-AP (AHCYL1 Antibody) at dilution of 1:200 (under 10x lens). Heat mediated antigen retrieval with Tris-EDTA buffer (pH 9.0).



Immunohistochemical analysis of paraffin-embedded human liver cancer tissue slide using 10658-3-AP (AHCYL1 Antibody) at dilution of 1:200 (under 40x lens). Heat mediated antigen retrieval with Tris-EDTA buffer (pH 9.0).



Immunofluorescent analysis of (-20°C Methanol) fixed HeLa cells using AHCYL1 antibody (10658-3-AP) at dilution of 1:400 and CoraLite@488-Conjugated AffiniPure Goat Anti-Rabbit IgG(H+L).