

For Research Use Only

# MME,CD10 Polyclonal antibody

Catalog Number: 10302-1-AP **2 Publications**



## Basic Information

<b>Catalog Number:</b> 10302-1-AP	<b>GenBank Accession Number:</b> BC101658	<b>Purification Method:</b> Antigen affinity purification
<b>Size:</b> 700 µg/ml	<b>GeneID (NCBI):</b> 4311	<b>Recommended Dilutions:</b> WB 1:500-1:1000 IHC 1:50-1:500
<b>Source:</b> Rabbit	<b>UNIPROT ID:</b> P08473	
<b>Isotype:</b> IgG	<b>Full Name:</b> membrane metallo-endopeptidase	
<b>Immunogen Catalog Number:</b> AG0427	<b>Calculated MW:</b> 750 aa, 86 kDa	
	<b>Observed MW:</b> 90-100 kDa	

## Applications

### Tested Applications:

FC, IHC, WB, ELISA

### Cited Applications:

WB

### Species Specificity:

human, mouse, rat

### Cited Species:

human, mouse, hamster

**Note-IHC: suggested antigen retrieval with TE buffer pH 9.0; (\*) Alternatively, antigen retrieval may be performed with citrate buffer pH 6.0**

### Positive Controls:

**WB :** mouse kidney tissue, HEK-293 cells, rat kidney tissue

**IHC :** human kidney tissue, human renal cell carcinoma tissue, human liver cancer tissue, human hepatocirrhosis tissue

## Background Information

MME is also names as neprilysin,CALLA,NEP,SFE,CD10 and belongs to the peptidase M13 family.It is a glycoprotein that is particularly abundant in kidney, where it is present on the brush border of proximal tubules and on glomerular epithelium.CD10 has been considered a useful marker in the diagnosis of renal carcinomas, because of its expression in clear cell and papillary renal cell carcinomas and its absence in chromophobe renal cell carcinomas(PMID:15286660).

## Notable Publications

Author	Pubmed ID	Journal	Application
Hsiao-Fan Lo	27917469	J Pathol	WB
Saijuan Li	37257698	Fitoterapia	WB

## Storage

### Storage:

Store at -20°C. Stable for one year after shipment.

### Storage Buffer:

PBS with 0.02% sodium azide and 50% glycerol pH 7.3.

Aliquoting is unnecessary for -20°C storage

For technical support and original validation data for this product please contact:

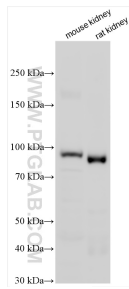
T: 4006900926

E: Proteintech-CN@ptglab.com

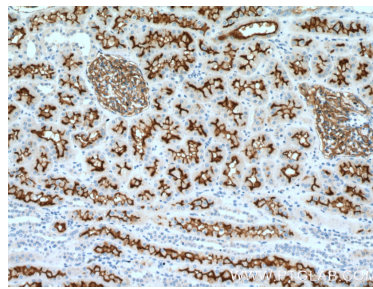
W: ptgcn.com

**This product is exclusively available under Proteintech Group brand and is not available to purchase from any other manufacturer.**

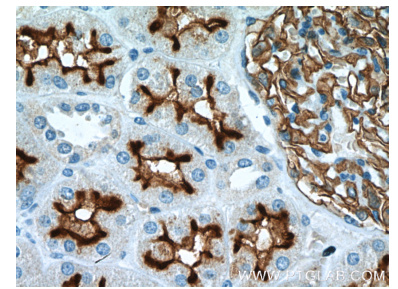
## Selected Validation Data



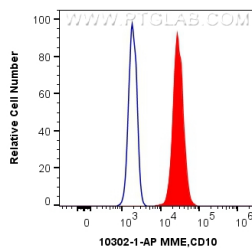
Various lysates were subjected to SDS PAGE followed by western blot with 10302-1-AP (MME,CD10 antibody) at dilution of 1:500 incubated at room temperature for 1.5 hours.



Immunohistochemical analysis of paraffin-embedded human kidney tissue slide using 10302-1-AP (MME, CD10 Antibody) at dilution of 1:200 (under 10x lens).



Immunohistochemical analysis of paraffin-embedded human kidney tissue slide using 10302-1-AP (MME, CD10 Antibody) at dilution of 1:200 (under 40x lens).



$1 \times 10^6$  Jurkat cells were intracellularly stained with 0.4 ug Anti-Human MME, CD10 (10302-1-AP) and CoraLite<sup>®</sup>488-Conjugated AffiniPure Goat Anti-Rabbit IgG(H+L) at dilution 1:1000 (red), or 0.4 ug Isotype Control. Cells were fixed with 4% PFA and permeabilized with Flow Cytometry Perm Buffer (PF00011-C).