

For Research Use Only

# FKBP1A Polyclonal antibody

Catalog Number: 10273-1-AP

Featured Product

6 Publications



## Basic Information

**Catalog Number:**

10273-1-AP

**Size:**

650 µg/ml

**Source:**

Rabbit

**Isotype:**

IgG

**Immunogen Catalog Number:**

AG0406

**GenBank Accession Number:**

BC001925

**GeneID (NCBI):**

2280

**UNIPROT ID:**

P62942

**Full Name:**

FK506 binding protein 1A, 12kDa

**Calculated MW:**

12 kDa

**Observed MW:**

12 kDa

**Purification Method:**

Antigen affinity purification

**Recommended Dilutions:**

WB 1:500-1:1000

IHC 1:20-1:200

## Applications

**Tested Applications:**

IHC, WB, ELISA

**Cited Applications:**

WB

**Species Specificity:**

human, mouse, rat

**Cited Species:**

human, mouse, pig

**Note-IHC: suggested antigen retrieval with TE buffer pH 9.0; (\*) Alternatively, antigen retrieval may be performed with citrate buffer pH 6.0**

**Positive Controls:**

WB : mouse brain tissue, human heart tissue, rat brain tissue

IHC : human ovary tumor tissue,

## Background Information

FKBP1A(FK506-binding protein 1A) is also named as FKBP1, FKBP12 and belongs to the FKBP-type PPIase family. It keeps in an inactive conformation TGFBR1, the TGF-beta type I serine/threonine kinase receptor, preventing TGF-beta receptor activation in absence of ligand and catalyzes the cis-trans isomerization of proline imidic peptide bonds in oligopeptides.

## Notable Publications

Author	Pubmed ID	Journal	Application
Xiaodan Hou	29137396	Oncotarget	WB
Xinhua Hou	32480263	Food Chem	WB
Shen Mynn Tan	25131211	Cell Rep	WB

## Storage

**Storage:**

Store at -20°C. Stable for one year after shipment.

**Storage Buffer:**

PBS with 0.02% sodium azide and 50% glycerol pH 7.3.

Aliquoting is unnecessary for -20°C storage

For technical support and original validation data for this product please contact:

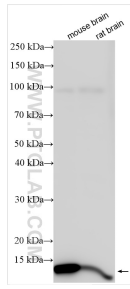
T: 4006900926

E: Proteintech-CN@ptglab.com

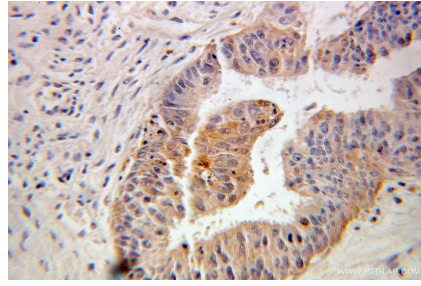
W: ptgcn.com

This product is exclusively available under Proteintech Group brand and is not available to purchase from any other manufacturer.

## Selected Validation Data



Various lysates were subjected to SDS PAGE followed by western blot with 10273-1-AP (FKBP1A antibody) at dilution of 1:600 incubated at room temperature for 1.5 hours.



Immunohistochemical analysis of paraffin-embedded human ovary tumor using 10273-1-AP (FKBP1A antibody) at dilution of 1:100 (under 25x lens).