

# CBX1 Polyclonal antibody

Catalog Number: 10241-2-AP

Featured Product

9 Publications

## Basic Information

## Catalog Number:

10241-2-AP

## Size:

650 µg/ml

## Source:

Rabbit

## Isotype:

IgG

## Immunogen Catalog Number:

AG0328

## GenBank Accession Number:

BC002609

## GeneID (NCBI):

10951

## UNIPROT ID:

P83916

## Full Name:

chromobox homolog 1 (HP1 beta homolog Drosophila )

## Calculated MW:

27 kDa

## Observed MW:

27 kDa

## Purification Method:

Antigen affinity purification

## Recommended Dilutions:

WB 1:500-1:2000

IP 0.5-4.0 µg for 1.0-3.0 mg of total protein lysate

IHC 1:250-1:1000

IF 1:50-1:500

## Applications

## Tested Applications:

IF/ICC, IHC, IP, WB, ELISA

## Cited Applications:

IF, IHC, IP, WB

## Species Specificity:

human, mouse, rat

## Cited Species:

human, mouse

**Note-IHC: suggested antigen retrieval with TE buffer pH 9.0; (\*) Alternatively, antigen retrieval may be performed with citrate buffer pH 6.0**

## Positive Controls:

WB : A431 cells, MCF-7 cells, HEK-293 cells, human brain tissue, NIH/3T3 cells

IP : HEK-293 cells,

IHC : human stomach cancer tissue, mouse testis tissue, human colon cancer tissue, human lung cancer tissue, human ovary tumor tissue

IF : HEK-293 cells,

## Background Information

One function of heterochromatin is the epigenetic silencing by sequestration of genes into transcriptionally repressed nuclear neighborhoods. Heterochromatin protein 1 (HP1) is a major component of heterochromatin and is a candidate for establishing and mediating gene silencing. This protein is expressed in all adult and embryonic tissues, as a homodimer.

## Notable Publications

Author	Pubmed ID	Journal	Application
Yin Zhao	36310139	Adv Sci (Weinh)	WB,IHC,IP
Zhangping He	32161174	J Virol	WB
Guang Yang	28361889	Nat Commun	WB

## Storage

## Storage:

Store at -20°C. Stable for one year after shipment.

## Storage Buffer:

PBS with 0.02% sodium azide and 50% glycerol pH 7.3.

Aliquoting is unnecessary for -20°C storage

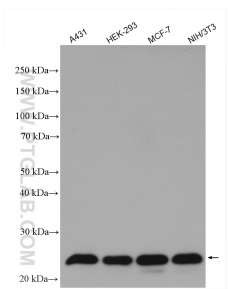
For technical support and original validation data for this product please contact:

T: 4006900926

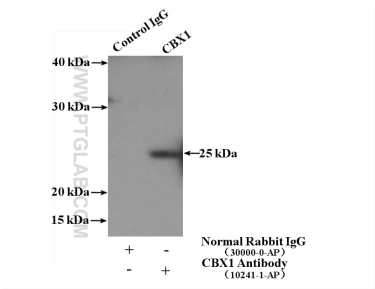
E: [Proteintech-CN@ptglab.com](mailto:Proteintech-CN@ptglab.com)W: [ptgcn.com](http://ptgcn.com)

**This product is exclusively available under Proteintech Group brand and is not available to purchase from any other manufacturer.**

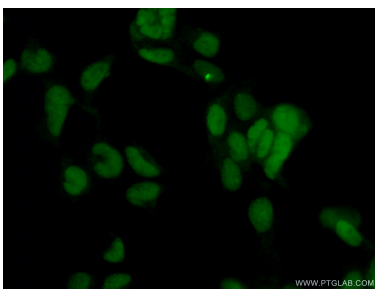
Selected Validation Data



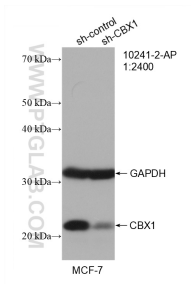
Various lysates were subjected to SDS PAGE followed by western blot with 10241-2-AP (CBX1 antibody) at dilution of 1:1000 incubated at room temperature for 1.5 hours.



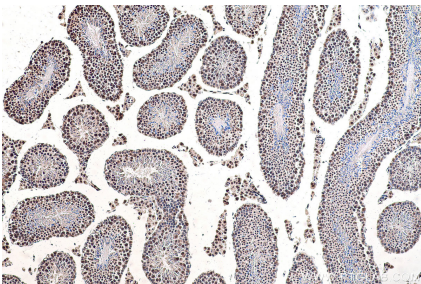
IP result of anti-CBX1 (IP:10241-2-AP, 3ug; Detection:10241-2-AP 1:500) with HEK-293 cells lysate 1480ug.



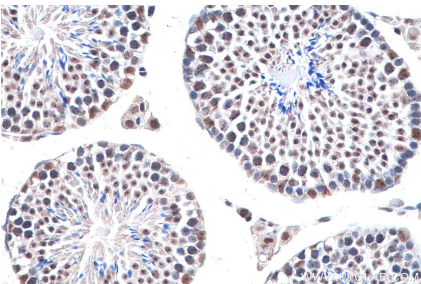
Immunofluorescent analysis of (10% Formaldehyde) fixed HEK-293 cells using 10241-2-AP (CBX1 antibody) at dilution of 1:50 and Alexa Fluor 488-conjugated AffiniPure Goat Anti-Rabbit IgG(H+L).



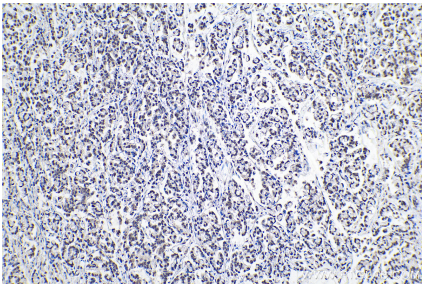
WB result of CBX1 antibody (10241-2-AP; 1:2400; incubated at room temperature for 1.5 hours) with sh-Control and sh-CBX1 transfected MCF-7 cells.



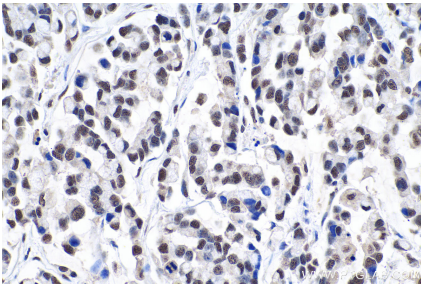
Immunohistochemical analysis of paraffin-embedded mouse testis tissue slide using 10241-2-AP (CBX1 antibody) at dilution of 1:500 (under 10x lens). Heat mediated antigen retrieval with Tris-EDTA buffer (pH 9.0).



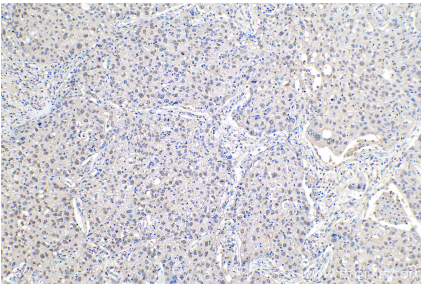
Immunohistochemical analysis of paraffin-embedded mouse testis tissue slide using 10241-2-AP (CBX1 antibody) at dilution of 1:1000 (under 40x lens). Heat mediated antigen retrieval with Tris-EDTA buffer (pH 9.0).



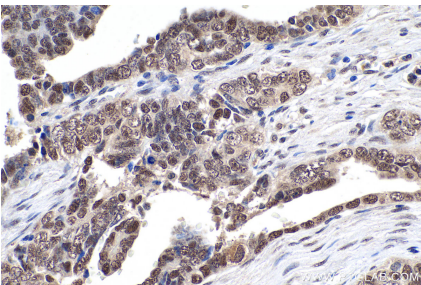
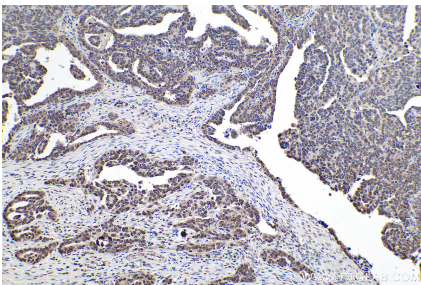
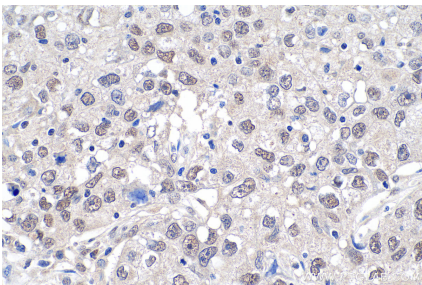
Immunohistochemical analysis of paraffin-embedded human colon cancer tissue slide using 10241-2-AP (CBX1 antibody) at dilution of 1:500 (under 10x lens). Heat mediated antigen retrieval with Tris-EDTA buffer (pH 9.0).



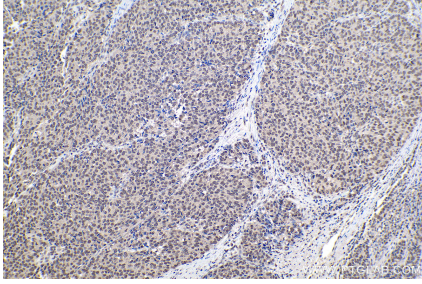
Immunohistochemical analysis of paraffin-embedded human colon cancer tissue slide using 10241-2-AP (CBX1 antibody) at dilution of 1:500 (under 40x lens). Heat mediated antigen retrieval with Tris-EDTA buffer (pH 9.0).



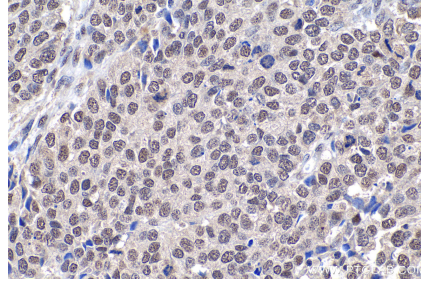
Immunohistochemical analysis of paraffin-embedded human lung cancer tissue slide using 10241-2-AP (CBX1 antibody) at dilution of 1:500 (under 10x lens). Heat mediated antigen retrieval with Tris-EDTA buffer (pH 9.0).



Immunohistochemical analysis of paraffin-embedded human lung cancer tissue slide using 10241-2-AP (CBX1 antibody) at dilution of 1:500 (under 40x lens). Heat mediated antigen retrieval with Tris-EDTA buffer (pH 9.0).



Immunohistochemical analysis of paraffin-embedded human ovary tumor tissue slide using 10241-2-AP (CBX1 antibody) at dilution of 1:500 (under 10x lens). Heat mediated antigen retrieval with Tris-EDTA buffer (pH 9.0).



Immunohistochemical analysis of paraffin-embedded human ovary tumor tissue slide using 10241-2-AP (CBX1 antibody) at dilution of 1:500 (under 40x lens). Heat mediated antigen retrieval with Tris-EDTA buffer (pH 9.0).

Immunohistochemical analysis of paraffin-embedded human stomach cancer tissue slide using 10241-2-AP (CBX1 antibody) at dilution of 1:500 (under 10x lens). Heat mediated antigen retrieval with Tris-EDTA buffer (pH 9.0).

Immunohistochemical analysis of paraffin-embedded human stomach cancer tissue slide using 10241-2-AP (CBX1 antibody) at dilution of 1:500 (under 40x lens). Heat mediated antigen retrieval with Tris-EDTA buffer (pH 9.0).