

# SAE1 Polyclonal antibody

Catalog Number: 10229-1-AP

5 Publications

## Basic Information

## Catalog Number:

10229-1-AP

## Size:

240 µg/ml

## Source:

Rabbit

## Isotype:

IgG

## Immunogen Catalog Number:

AG0275

## GenBank Accession Number:

BC000344

## GeneID (NCBI):

10055

## UNIPROT ID:

Q9UBE0

## Full Name:

SUMO1 activating enzyme subunit 1

## Calculated MW:

38 kDa

## Observed MW:

38 kDa

## Purification Method:

Antigen affinity purification

## Recommended Dilutions:

WB 1:200-1:1000

IHC 1:20-1:200

IF 1:20-1:200

## Applications

## Tested Applications:

IF/ICC, IHC, WB, ELISA

## Cited Applications:

IHC, WB

## Species Specificity:

human, mouse, rat

## Cited Species:

human, mouse

## Positive Controls:

WB: A431 cells, A549 cells, COLO 320 cells, HEK-293 cells, HeLa cells

IHC: human colon cancer tissue, human skin cancer tissue

IF: HeLa cells,

**Note-IHC: suggested antigen retrieval with *TE buffer pH 9.0*; (\*) Alternatively, antigen retrieval may be performed with *citrate buffer pH 6.0***

## Background Information

SAE1(SUMO-activating enzyme subunit 1) is also named as AOS1, SUA1, UBLE1A and belongs to the ubiquitin-activating E1 family. SAE1 has a calculated molecular mass of 38 kD. It had an apparent molecular mass of 40 kD by SDS-PAGE. SAE1 and UBA2 form a heterodimer that functions as a SUMO-activating enzyme for the sumoylation of proteins(PMID:9920803). Western blot analysis of synchronized HeLa cells detects increased AOS1 expression as cells progressed through S phase, followed by a substantial decrease in G2 phase. Immunofluorescence analysis shows AOS1 and UBA2 distributed throughout nuclei, but they are excluded from nucleoli.(PMID:11481243).

## Notable Publications

Author	Pubmed ID	Journal	Application
Lingjie Yan	36414671	Nat Commun	WB
Dong Chen	22342750	Curr Biol	WB
Yang Liu	35859792	Open Med (Wars)	IHC

## Storage

## Storage:

Store at -20°C. Stable for one year after shipment.

## Storage Buffer:

PBS with 0.02% sodium azide and 50% glycerol pH 7.3.

Aliquoting is unnecessary for -20°C storage

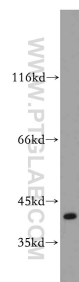
For technical support and original validation data for this product please contact:

T: 4006900926

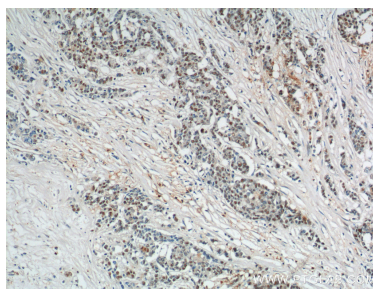
E: [Proteintech-CN@ptglab.com](mailto:Proteintech-CN@ptglab.com)W: [ptgcn.com](http://ptgcn.com)

**This product is exclusively available under Proteintech Group brand and is not available to purchase from any other manufacturer.**

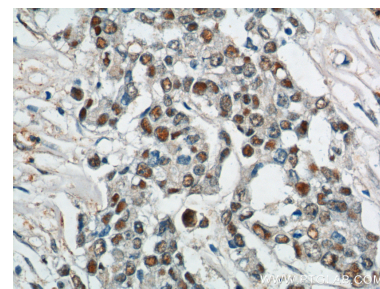
## Selected Validation Data



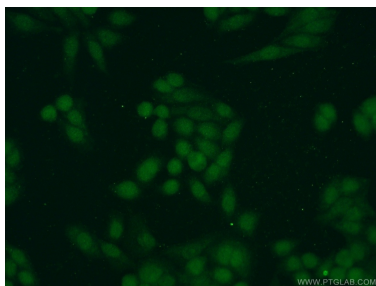
A431 cells were subjected to SDS PAGE followed by western blot with 10229-1-AP (SAE1 antibody) at dilution of 1:300 incubated at room temperature for 1.5 hours.



Immunohistochemical analysis of paraffin-embedded human colon cancer tissue slide using 10229-1-AP (SAE1 Antibody) at dilution of 1:200 (under 10x lens).



Immunohistochemical analysis of paraffin-embedded human colon cancer tissue slide using 10229-1-AP (SAE1 Antibody) at dilution of 1:200 (under 40x lens).



Immunofluorescent analysis of HeLa cells using 10229-1-AP (SAE1 antibody) at dilution of 1:50 and Alexa Fluor 488-conjugated AffiniPure Goat Anti-Rabbit IgG(H+L).