

For Research Use Only

CSTF1 Polyclonal antibody

Catalog Number: 10064-2-AP

5 Publications



Basic Information

Catalog Number:

10064-2-AP

Size:

900 µg/ml

Source:

Rabbit

Isotype:

IgG

Immunogen Catalog Number:

AG0109

GenBank Accession Number:

BC001011

GeneID (NCBI):

1477

UNIPROT ID:

Q05048

Full Name:

cleavage stimulation factor, 3' pre-RNA, subunit 1, 50kDa

Calculated MW:

48.3 kDa

Observed MW:

50 kDa

Purification Method:

Antigen affinity purification

Recommended Dilutions:

WB 1:500-1:1000

IP 0.5-4.0 µg for 1.0-3.0 mg of total protein lysate

Applications

Tested Applications:

IP, WB, ELISA

Cited Applications:

WB

Species Specificity:

human, mouse, rat

Cited Species:

human, rat, mouse

Positive Controls:

WB : HeLa cells, K-562 cells

IP : NIH/3T3 cells,

Background Information

Cleavage stimulation factor (CstF), a heterotrimeric protein with subunits of 77, 64, and 50 kD (CstF-77, -64, and -50), is a polyadenylation factor that helps to specify the site of processing. CstF recognizes the G+U-rich element, a sequence located downstream of the cleavage site. CstF-50 subunit interacts with the COOH-terminal domain of the RNAP II largest subunit (CTD). This subunit may be responsible for the interaction of CSTF with other factors to form a stable complex on the pre-mRNA, and multiple WD domains are required for protein interactions.

Notable Publications

Author	Pubmed ID	Journal	Application
J Dai	26311342	Andrology	
Patricia Uguen	12941705	EMBO J	WB
Ziqian Min	36444304	iScience	

Storage

Storage:

Store at -20°C. Stable for one year after shipment.

Storage Buffer:

PBS with 0.02% sodium azide and 50% glycerol pH 7.3.

Aliquoting is unnecessary for -20°C storage

For technical support and original validation data for this product please contact:

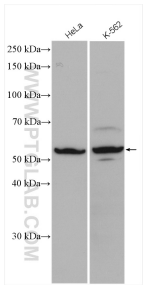
T: 4006900926

E: Proteintech-CN@ptglab.com

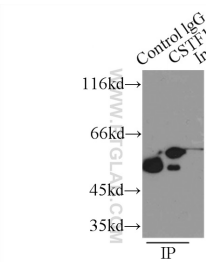
W: ptgcn.com

This product is exclusively available under Proteintech Group brand and is not available to purchase from any other manufacturer.

Selected Validation Data



Various lysates were subjected to SDS PAGE followed by western blot with 10064-2-AP (CSTF1 antibody) at dilution of 1:500 incubated at room temperature for 1.5 hours.



IP result of anti-CSTF1 (IP:10064-2-AP, 2ug; Detection:10064-2-AP 1:500) with NIH/3T3 cells lysate 2500ug.