

# SHC Polyclonal antibody

Catalog Number: 10054-1-AP

Featured Product

10 Publications

## Basic Information

## Catalog Number:

10054-1-AP

## Size:

800 µg/ml

## Source:

Rabbit

## Isotype:

IgG

## Immunogen Catalog Number:

AG0103

## GenBank Accession Number:

NM\_183001

## GeneID (NCBI):

6464

## UNIPROT ID:

P29353

## Full Name:

SHC (Src homology 2 domain containing) transforming protein 1

## Calculated MW:

63 kDa

## Observed MW:

66 kDa

## Purification Method:

Antigen affinity purification

## Recommended Dilutions:

WB 1:1000-1:4000

IHC 1:50-1:500

IF 1:50-1:500

## Applications

## Tested Applications:

IF/ICC, IHC, WB, ELISA

## Cited Applications:

WB, IF

## Species Specificity:

human, mouse, rat

## Cited Species:

human, rat, sheep, mouse

**Note-IHC: suggested antigen retrieval with TE buffer pH 9.0; (\*) Alternatively, antigen retrieval may be performed with citrate buffer pH 6.0**

## Positive Controls:

**WB** : C6 cells, A431 cells, mouse skin tissue, HUVEC cells, HeLa cells, U2OS cells

**IHC** : human colon cancer tissue,

**IF** : HeLa cells,

## Background Information

The proto-oncogene SHC family consists of SHCA, SHCB, SHCC, and SHCD4 gene members, which can encode 7 kinds of cohesive molecules. SHC family is widely expressed and functional. The SHC1 gene is located in zone 1, region 2 of human chromosome 1. SHC1 is believed to be involved in inhibiting neuronal apoptosis and regulating the receptor tyrosine kinase pathway. SHC1 sensitizes cancer cells to the 8-Cl-cAMP treatment.

## Notable Publications

| Author       | Pubmed ID | Journal              | Application |
|--------------|-----------|----------------------|-------------|
| Xiaohui Zhou | 32935825  | Clinics (Sao Paulo)  | WB          |
| Jie Zhou     | 35765036  | Stem Cell Res Ther   | WB          |
| Rong Fu      | 31428222  | Oxid Med Cell Longev | IF          |

## Storage

## Storage:

Store at -20°C. Stable for one year after shipment.

## Storage Buffer:

PBS with 0.02% sodium azide and 50% glycerol pH 7.3.

Aliquoting is unnecessary for -20°C storage

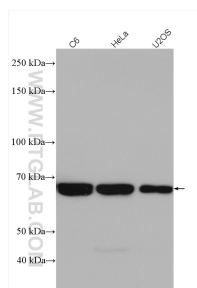
For technical support and original validation data for this product please contact:

T: 4006900926

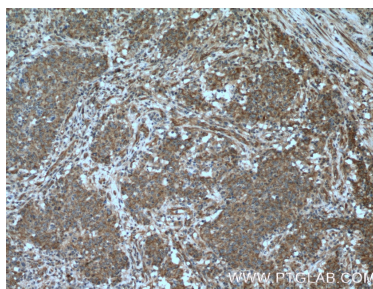
E: [Proteintech-CN@ptglab.com](mailto:Proteintech-CN@ptglab.com)W: [ptgcn.com](http://ptgcn.com)

**This product is exclusively available under Proteintech Group brand and is not available to purchase from any other manufacturer.**

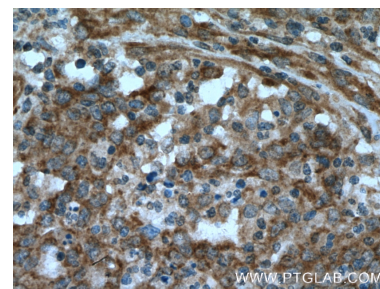
## Selected Validation Data



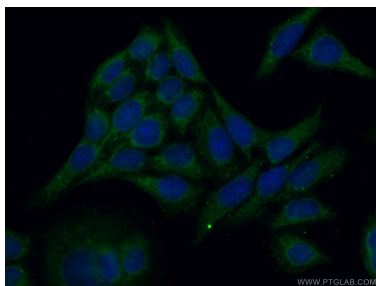
Various lysates were subjected to SDS PAGE followed by western blot with 10054-1-AP (SHC antibody) at dilution of 1:2000 incubated at room temperature for 1.5 hours.



Immunohistochemical analysis of paraffin-embedded human colon cancer tissue slide using 10054-1-AP (SHC antibody at dilution of 1:200 (under 10x lens).



Immunohistochemical analysis of paraffin-embedded human colon cancer tissue slide using 10054-1-AP (SHC antibody at dilution of 1:200 (under 40x lens).



Immunofluorescent analysis of (-20°C Ethanol) fixed HeLa cells using 10054-1-AP (SHC antibody) at dilution of 1:50 and Alexa Fluor 488-conjugated AffiniPure Goat Anti-Rabbit IgG(H+L).