



PRODUCT DESCRIPTION

**FOR IN VITRO RESEARCH USE ONLY
NOT FOR USE IN HUMANS OR ANIMALS**

ProteinTech Group, Inc
2201 W. Campbell Park Dr.
Chicago, IL 60612
Toll Free: 1-888-4PTGLAB
In Illinois: 1312-455-8498
Fax: 1-312-455-8408
Web: www.ptglab.com

ACTB MonoClonal Antibody

Catalog No. : 60008-1-Ig

Size : 150ug / 150ul

Source : Mouse

IsoType : IgM

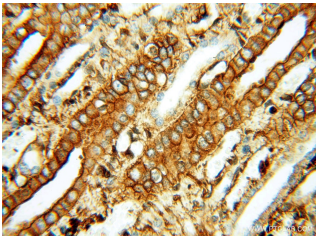
Synonyms :

ACTB; ACTB;ACTB;PS1TP5BP1

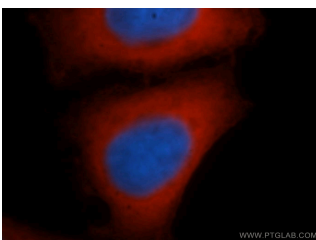
;beta-actin; β -actin



MCF7 cell were subjected to SDS PAGE followed by western blot with 60008-1-Ig(ACTB Antibody) at dilution of 1:2000



Immunohistochemistry of paraffin-embedded H-kidney(glomerulus) using 60008-1-Ig(ACTB Antibody) at Dilution 1:100 (under 40x lens)



Immunofluorescent analysis of HepG2 cells, using 60008-1-Ig and Rhodamine-labeled goat anti-mouse IgG (red). Blue pseudocolor = DAPI (fluorescent DNA dye).

Applications

Tested Applications:

ELISA,WB,IHC,IF

Specificity Reaction:

Human, Mouse,Rat; Other species are not tested.Please decide the specificity by homology

Positive WB detected In:

MCF7 cell,293 cell

Calculated ACTB MW:

42kd

Observed ACTB MW:

42kd

Positive IHC detected In:

H-kidney(glomerulus)

Application key: WB=Western Blotting ,IHC=Immunohistochemistry, IF=Immunofluorescence

Immunogen Information

Immunogen: ag0297

GenbankNo: BC002409

GeneID: 60

Full Name: actin, beta

Product Information

Purify: Caprylic Acid/Ammonium Sulfate Precipitation

Storage: PBS with 0.1% Sodium Azide, 50% Glycerol, pH 7.3. -20oC, Avoid freeze / thaw cycles.