



# PRODUCT DESCRIPTION

**FOR IN VITRO RESEARCH USE ONLY  
NOT FOR USE IN HUMANS OR ANIMALS**

ProteinTech Group, Inc  
2201 W. Campbell Park Dr.  
Chicago, IL 60612  
Toll Free: 1-888-4PTGLAB  
In Illinois: 1312-455-8498  
Fax: 1-312-455-8408  
Web: www.ptglab.com

## GAPDH MonoClonal Antibody

**Catalog No. :** 60004-1-Ig

**Size :** 150ug / 150ul

**Source :** Mouse

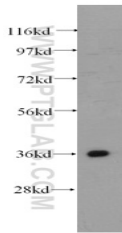
**IsoType :** IgG2b

**Synonyms :**

GAPDH;

GAPDH;GAPDH;G3PD;GAPD;M

GC88685 ;



Raji cell were subjected to SDS PAGE followed by western blot with 60004-1-Ig(GAPDH Antibody) at dilution of 1:2000

### Applications

**Tested Applications:**

ELISA,WB

**Specificity Reaction:**

Human, Mouse, Rat; Other species are not tested.Please decide the specificity by homology

**Positive WB detected In:**

Raji cell

**Calculated GAPDH MW:**

36kd

**Observed GAPDH MW:**

36kd

Application key: WB=Western Blotting ,IHC=Immunohistochemistry, IF=Immunofluorescence

### Immunogen Information

**Immunogen:** ag0766

**GenbankNo:** BC004109

**GeneID:** 2597

**Full Name:** glyceraldehyde-3-phosphate dehydrogenase

### Product Information

**Purify:** Caprylic Acid/Ammonium Sulfate Precipitation

**Storage:** PBS with 0.1% Sodium Azide, 50% Glycerol, pH 7.3. -20oC, Avoid freeze / thaw cycles.