



## PRODUCT DESCRIPTION

ProteinTech Group, Inc  
2201 W. Campbell Park Dr.  
Chicago, IL 60612  
Toll Free: 1-888-4PTGLAB  
In Illinois: 1312-455-8498  
Fax: 1-312-455-8408  
Web: [www.ptglab.com](http://www.ptglab.com)

FOR IN VITRO RESEARCH USE ONLY  
NOT FOR USE IN HUMANS OR ANIMALS

### Antibody to Myc Tag

**Catalog Number:** 60003-1-Ig

**Isotype:** IgG1

**Source:** Mouse

#### Product Information

**Description:** Purified Mouse Anti-Myc monoclonal antibody

**Immunogen:** EQKLISEEDL (Myc) synthetic peptide conjugate to KLH

**Clonality:** Monoclonal

**Purification :** Protein A Affinity Purified from mouse ascites fluid

**Form:** Liquid

**Storage Buffer:** PBS with 0.1% Sodium Azide, 50% Glycerol, pH 7.3.

**Storage Condition:** -Store at -20°C, Avoid freeze / thaw cycles.

**Concentration:** 1mg/ml

**Size:** 50ul

#### Applications

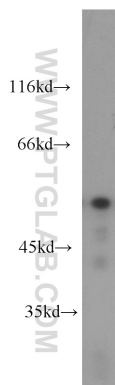
**Tested Applications:** WB; IP; ELISA ,Dot

**Recommended Titers:** ELISA 1:8000~100,000

Western blotting 1:3000~8000

**Specificity:** Recognizes the N-terminal or C-terminal internal Myc-tagged fusion proteins

**Positive control:** Myc-tagged protein



Myc-tagged fusion protein(55kD) were subjected to SDS-PAGE followed by Western Blot with 60003-1-Ig at dilution of 1:6000.