



PRODUCT DESCRIPTION

ProteinTech Group, Inc
2201 W. Campbell Park Dr.
Chicago, IL 60612
Toll Free: 1-888-4PTGLAB
In Illinois: 1312-455-8498
Fax: 1-312-455-8408
Web: www.ptglab.com

FOR IN VITRO RESEARCH USE ONLY
NOT FOR USE IN HUMANS OR ANIMALS

Antibody to 6XHis Tag

Catalog Number: 60001-1-Ig

Isotype: IgG2b

Source: Mouse

Product Information

Description: Purified Mouse Anti-HIS monoclonal antibody

Immunogen: HHHHHH(6x His) synthetic peptide conjugate to KLH

Clonality: Monoclonal

Purification : Protein A Affinity Purified from mouse ascites fluid

Form: Liquid

Storage Condition: -20°C, Avoid freeze / thaw cycles.

Storage Buffer: PBS with 0.1% Sodium Azide, 50% Glycerol, pH 7.3.

Concentration: 1mg/ml

Size: 100ul

Applications

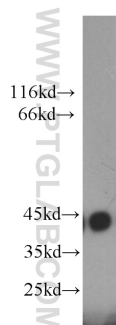
Tested Applications: WB; IP; ELISA ,Dot

Recommended Titers: ELISA 1:8000~100,000

Western blotting 1:3000~6000

Specificity: Recognizes the N-terminal,C-terminal or internal 6x His-tagged fusion proteins

Positive control: His-tagged protein



His-tagged fusion protein(44kD) were subjected to SDS-PAGE followed by Western Blot with 60001-1-Ig at dilution of 1:5000.