



PRODUCT DESCRIPTION

**FOR IN VITRO RESEARCH USE ONLY
NOT FOR USE IN HUMANS OR ANIMALS**

ProteinTech Group, Inc
2201 W. Campbell Park Dr.
Chicago, IL 60612
Toll Free: 1-888-4PTGLAB
In Illinois: 1312-455-8498
Fax: 1-312-455-8408
Web: www.ptglab.com

ACTB PolyClonal Antibody

Catalog No. : 20536-1-AP

Size : 23ug / 150ul

Source : Rabbit

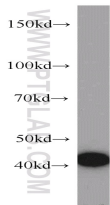
IsoType : IgG

Synonyms :

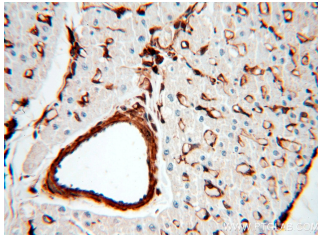
ACTB;

ACTB;ACTB;PS1TP5BP1

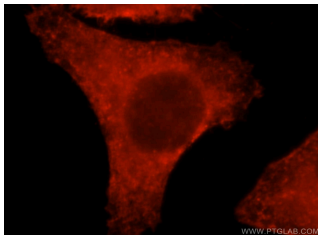
;beta-actin; β -actin



Jurkat cell were subjected to SDS PAGE followed by western blot with 20536-1-AP(ACTB Antibody) at dilution of 1:2000



Immunohistochemistry of paraffin-embedded H-heart using 20536-1-AP(ACTB Antibody) at Dilution 1:100 (under 40x lens)



Immunofluorescent analysis of HepG2 cells, using ACTB antibody 20536-1-AP at 1:25 dilution and Rhodamine-labeled goat anti-rabbit IgG (red).

Background

This antibody is specific to Beta-actin, but not other actins.

Applications

Tested Applications:

ELISA, WB, IHC, IF

Specificity Reaction:

Human, Mouse, Rat, Zebrafish; Other species are not tested. Please decide the specificity by homology

Positive WB detected In:

Jurkat cell, 293 cell, A431 cell, Mouse spleen, NIH3T3 cell, Human testis

Calculated ACTB MW:

42kd

Observed ACTB MW:

42kd

Positive IHC detected In:

H-heart

Application key: WB=Western Blotting, IHC=Immunohistochemistry, IF=Immunofluorescence

Immunogen Information

Immunogen: ag14521

GenbankNo: BC002409

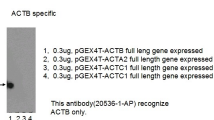
GeneID: 60

Full Name: actin, beta

Product Information

Purify: Antigen Affinity purified

Storage: PBS with 0.02% Sodium Azide, 50% Glycerol, pH 7.3. -20oC, Avoid freeze / thaw cycles.



Fusion protein test the specificity of Beta-Actin.