



PRODUCT DESCRIPTION

**FOR IN VITRO RESEARCH USE ONLY
NOT FOR USE IN HUMANS OR ANIMALS**

ProteinTech Group, Inc
2201 W. Campbell Park Dr.
Chicago, IL 60612
Toll Free: 1-888-4PTGLAB
In Illinois: 1312-455-8498
Fax: 1-312-455-8408
Web: www.ptglab.com

GAPDH PolyClonal Antibody

Catalog No. : 10494-1-AP

Size : 15ug / 150ul

Source : Rabbit

IsoType : IgG

Synonyms :

GAPDH;

GAPDH;GAPDH;G3PD;GAPD;M

GC88685 ;

Applications

Tested Applications:

ELISA,WB,IHC,IF

Specificity Reaction:

Human,Mouse,Rat; Other species are not tested.Please decide the specificity by homology

Positive WB detected In:

K562 cell,293 cell;Hela cell;SGC-7901 cell

Calculated GAPDH MW:

36kd

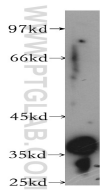
Observed GAPDH MW:

36kd

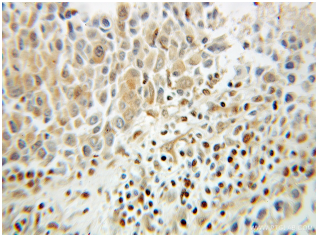
Positive IHC detected In:

Breast cancer

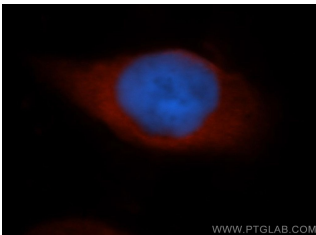
Application key: WB=Western Blotting ,IHC=Immunohistochemistry, IF=Immunofluorescence



K562 cell were subjected to SDS PAGE followed by western blot with 10494-1-AP(GAPDH Antibody) at dilution of 1:1000



Immunohistochemistry of paraffin-embedded Breast cancer using 10494-1-AP(GAPDH Antibody) at Dilution 1:100 (under 10x lens)



Immunofluorescent analysis of HeLa cells, using 10494-1-AP and Rhodamine-labeled goat anti-rabbit IgG (red). Blue pseudocolor = DAPI (fluorescent DNA dye).

Immunogen Information

Immunogen: ag0766

GenbankNo: BC004109

GeneID: 2597

Full Name: glyceraldehyde-3-phosphate dehydrogenase

Product Information

Purify: Antigen Affinity Purified

Storage: PBS with 0.1% Sodium Azide, 50% Glycerol, pH 7.3. -20oC, Avoid freeze / thaw cycles.