



# PRODUCT DESCRIPTION

ProteinTech Group, Inc  
2201 W. Campbell Park Dr.  
Chicago, IL 60612  
Toll Free: 1-888-4PTGLAB  
In Illinois: 1312-455-8498  
Fax: 1-312-455-8408  
Web: [www.ptglab.com](http://www.ptglab.com)

FOR IN VITRO RESEARCH USE ONLY  
NOT FOR USE IN HUMANS OR ANIMALS

## Antibody to GST

**Catalog Number:** 10000-0-AP

**Isotype:** IgG

**Source:** Rabbit

### Product Information

**Description:** Purified Rabbit Anti GST PolyClonal antibody

**Immunogen:** Recombinant Protein

**Clonality:** Polyclonal

**Purity :** Antigen Affinity Purified

**Form:** Liquid

**Storage Condition:** -20°C, Avoid freeze / thaw cycles.

**Storage Buffer:** PBS with 0.1% Sodium Azide, 50% Glycerol, pH 7.3.

**Concentration:** 650ug/ml

### Applications

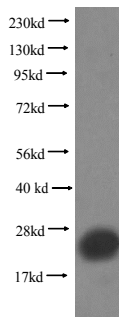
**Tested Applications:** WB; IP; ELISA

**Recommended Titers:** ELISA 1:1,000~100,000

Western blotting 1:1000~3,000

**Specificity:** Reacts with *Schistosoma japonicum*.

**Positive control:** GST-tagged protein



GST-tagged protein were subjected to SDS PAGE followed by western blot with affinity purified Ab at dilution of 1:1000-3000