

For Research Use Only.
Not For Use In Diagnostics.

CoraLite488-conjugated Goat Anti-Mouse IgG(H+L)

Catalog Number:SA00013-1



www.ptglab.com

Information

Catalog Number:

SA00013-1

Host:

Goat

Applications:

IF, FC

Reactivity:

Mouse

Physical State:

Liquid

Conjugation:

CoraLite®488

Recommended Dilutions

1:100 – 1:1000

Preservative

0.02% Sodium Azide

Fluorophore

CL488 Fluorescent Dye, A_{max}=488 nm; E_{max}=515 nm

Stabilizer

5 mg/ml BSA

Safety Notes

This product is for research use only, not for diagnostic or therapeutic use.

Storage

Storage:

Store at -20°C. Stable for one year after shipment.

Storage Buffer:

0.01 M Sodium phosphate, 0.25 M NaCl, 50% glycerol, 5 mg/ml BSA, 0.02% Sodium Azide, pH 7.6.

Aliquoting is unnecessary for -20°C storage

Purity

The antibody was purified from antisera by immunoaffinity chromatography using antigens coupled to agarose beads.

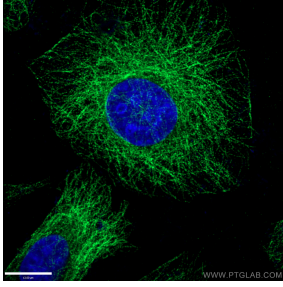
For technical support and original validation data for this product please contact:

T: 4006900926

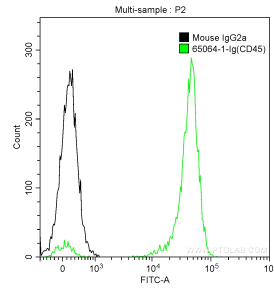
E: Proteintech-CN@ptglab.com W: ptgcn.com

This product is exclusively available under Proteintech Group brand and is not available to purchase from any other manufacturer.

Selected Validation Data



Immunofluorescent analysis of (-20 °C Ethanol) fixed HepG2 cells using 66031-1-Ig (alpha Tubulin antibody) at dilution of 1:100 and CoraLite®488-Conjugated Goat Anti-Mouse IgG(H+L) (SA00013-1).



1X10⁶ human peripheral blood lymphocytes were surface stained with 0.5 ug Anti-Human CD45 (65064-1-Ig, Clone: F10-89-4) and CoraLite®488-Conjugated Goat Anti-Mouse IgG(H+L) (SA00013-1) at dilution 1:1000 (green), or 0.5 ug Mouse IgG2a Isotype Control (black). Cells were not fixed.