

## 14-3-3 Sigma Monoclonal antibody

Catalog Number: 66251-1-Ig 4 Publications

## Basic Information

Catalog Number:

66251-1-Ig

Concentration:

1803 ug/ml

Source:

Mouse

Isotype:

IgG1

Immunogen Catalog Number:

AG12644

GenBank Accession Number:

BC002995

GeneID (NCBI):

2810

UNIPROT ID:

P31947

Full Name:

stratifin

Calculated MW:

28 kDa

Observed MW:

28-30 kDa

Purification Method:

Protein G purification

CloneNo.:

3F10D9

Recommended Dilutions:

WB: 1:5000-1:50000

IHC: 1:200-1:8000

IF/ICC: 1:20-1:200

## Applications

Tested Applications:

WB, IHC, IF/ICC, ELISA

Cited Applications:

WB, IHC, IF

Species Specificity:

human

Cited Species:

human, mouse

**Note-IHC: suggested antigen retrieval with TE buffer pH 9.0; (\*) Alternatively, antigen retrieval may be performed with citrate buffer pH 6.0**

Positive Controls:

**WB:** A-253 cells, A431 cells, HeLa cells, MCF-7 cells, HT-1376 cells, HaCaT cells, SCaBER cells, MCF-10A cells, MDA-MB-468 cells

**IHC:** human skin tissue, human breast cancer tissue, human breast hyperplasia tissue, human lung cancer tissue

**IF/ICC:** MCF-7 cells,

## Background Information

14-3-3 Sigma is a member 14-3-3 family of highly conserved proteins participating in diverse cellular processes including cell cycle progression. It is exclusively present in various epithelial cells, and alternatively named as human epithelial marker (HEM), or stratifin. Alteration of its expression has been linked to cancer.

## Notable Publications

Author	Pubmed ID	Journal	Application
Yoshihiko Kobayashi	32661339	Nat Cell Biol	IF
Xuechao Li	34532265	Transl Androl Urol	IHC
Hua Chen	37956258	Environ Toxicol	IHC

## Storage

Storage:

Store at -20°C. Stable for one year after shipment.

Storage Buffer:

PBS with 0.02% sodium azide and 50% glycerol, pH7.3

Aliquoting is unnecessary for -20°C storage

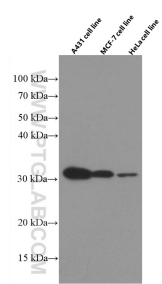
For technical support and original validation data for this product please contact:

T: 4006900926

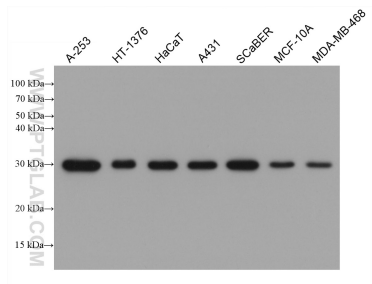
E: [Proteintech-CN@ptglab.com](mailto:Proteintech-CN@ptglab.com)W: [ptgcn.com](http://ptgcn.com)

This product is exclusively available under Proteintech Group brand and is not available to purchase from any other manufacturer.

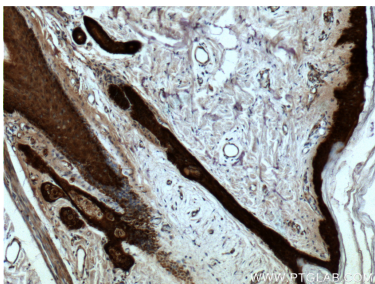
Selected Validation Data



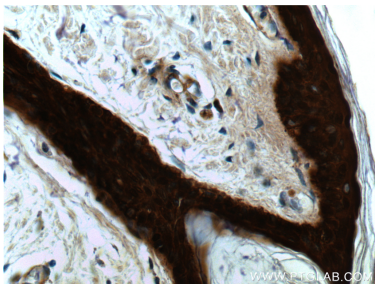
Various cell lysates were subjected to SDS PAGE followed by western blot with 66251-1-Ig (14-3-3 sigma antibody) at dilution of 1:7000 incubated at room temperature for 1.5 hours.



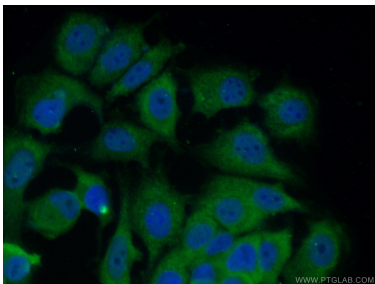
A-253 cells were subjected to SDS PAGE followed by western blot with 66251-1-Ig (14-3-3 Sigma antibody) at dilution of 1:20000 incubated at room temperature for 1.5 hours.



Immunohistochemical analysis of paraffin-embedded human skin tissue slide using 66251-1-Ig (14-3-3 sigma antibody at dilution of 1:2000 (under 10x lens).



Immunohistochemical analysis of paraffin-embedded human skin tissue slide using 66251-1-Ig (14-3-3 sigma antibody at dilution of 1:2000 (under 40x lens).



Immunofluorescent analysis of MCF-7 cells using 66251-1-Ig (14-3-3 sigma antibody) at dilution of 1:100 and Alexa Fluor 488-conjugated AffiniPure Goat Anti-Mouse IgG (H+L).