

For Research Use Only

# Claudin 18 Monoclonal antibody

Catalog Number: 66167-1-Ig **5 Publications**



## Basic Information

Catalog Number:

66167-1-Ig

Concentration:

1600 ug/ml

Source:

Mouse

Isotype:

IgG2a

Immunogen Catalog Number:

AG15517

GenBank Accession Number:

BC146668

GeneID (NCBI):

51208

UNIPROT ID:

P56856

Full Name:

claudin 18

Calculated MW:

261 aa, 28 kDa

Observed MW:

29 kDa

Purification Method:

Protein A purification

CloneNo.:

5G7F2

Recommended Dilutions:

IP: 0.5-4.0 ug for 1.0-3.0 mg of total protein lysate

IHC: 1:500-1:2000

## Applications

Tested Applications:

IHC, IP, ELISA

Cited Applications:

WB, IHC, IF

Species Specificity:

human, mouse

Cited Species:

human, mouse

**Note-IHC: suggested antigen retrieval with TE buffer pH 9.0; (\*) Alternatively, antigen retrieval may be performed with citrate buffer pH 6.0**

Positive Controls:

IP: mouse stomach tissue,

IHC: human pancreas cancer tissue, human ovary tumor tissue, human stomach tissue

## Background Information

Claudin 18 (CLDN18) belongs to the large claudin family of proteins, which are tetraspan transmembrane proteins of tight junctions (PMID: 11585919; 18036336). Claudins exhibit specific patterns of expression in different tissues (PMID: 15447685). CLDN18 is specifically expressed in the stomach and lung. CLDN18 has two alternatively spliced variants, CLDN18.1 and CLDN18.2. CLDN18.2 is a highly selective gastric lineage marker that determines the gastric phenotype in a neoplastic condition, whereas CLDN18.1 is lung specific (PMID: 11585919; 21832145). Altered CLDN18 expression has been reported in various human malignancies, including gastric cancer, lung adenocarcinoma, and pancreatic neoplasm (PMID: 17459057; 22076167; 21832145). This antibody can recognize both CLDN18.1 and CLDN18.2.

## Notable Publications

Author	Pubmed ID	Journal	Application
Nobuya Kurabe	27190696	World J Gastrointest Pathophysiol	
Bailey A Bye	40227649	Cancers (Basel)	IF
Shuai Zhang	39659940	Am J Cancer Res	WB,IHC,IF

## Storage

Storage:

Store at -20°C. Stable for one year after shipment.

Storage Buffer:

PBS with 0.02% sodium azide and 50% glycerol, pH7.3

Aliquoting is unnecessary for -20°C storage

For technical support and original validation data for this product please contact:

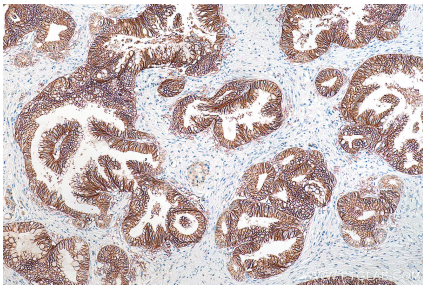
T: 4006900926

E: [Proteintech-CN@ptglab.com](mailto:Proteintech-CN@ptglab.com)

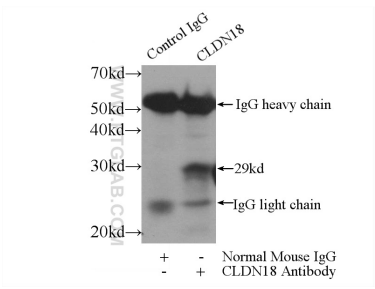
W: [ptgcn.com](http://ptgcn.com)

**This product is exclusively available under Proteintech Group brand and is not available to purchase from any other manufacturer.**

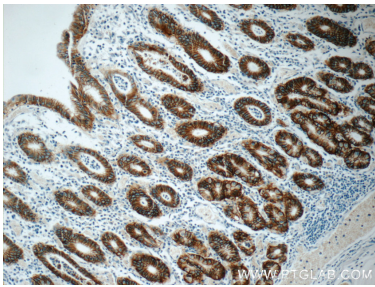
Selected Validation Data



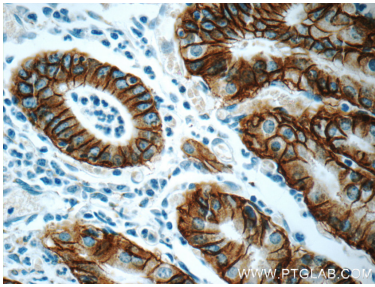
Immunohistochemical analysis of paraffin-embedded human pancreas cancer tissue slide using 66167-1-Ig (Claudin 18 antibody) at dilution of 1:1000 (under 10x lens). Heat mediated antigen retrieval with Tris-EDTA buffer (pH 9.0).



IP result of anti-Claudin 18 (IP:66167-1-Ig, 3ug; Detection:66167-1-Ig 1:300) with mouse stomach tissue lysate 4000ug.



Immunohistochemical analysis of paraffin-embedded human stomach tissue slide using 66167-1-Ig (Claudin 18 antibody at dilution of 1:1000).



Immunohistochemical analysis of paraffin-embedded human stomach tissue slide using 66167-1-Ig (Claudin 18 antibody at dilution of 1:1000).