

For Research Use Only

# Aldolase C Monoclonal antibody

Catalog Number:66120-1-Ig



## Basic Information

<b>Catalog Number:</b> 66120-1-Ig	<b>GenBank Accession Number:</b> BC003613	<b>Purification Method:</b> Protein G purification
<b>Concentration:</b> 2500 ug/ml	<b>GeneID (NCBI):</b> 230	<b>CloneNo.:</b> 5H7A5
<b>Source:</b> Mouse	<b>UNIPROT ID:</b> P09972	<b>Recommended Dilutions:</b> WB 1:5000-1:50000 IHC 1:50-1:500 IF/ICC 1:400-1:1600
<b>Isotype:</b> IgG1	<b>Full Name:</b> aldolase C, fructose-bisphosphate	
<b>Immunogen Catalog Number:</b> AG6779	<b>Calculated MW:</b> 39 kDa	
	<b>Observed MW:</b> 39 kDa	

## Applications

**Tested Applications:**  
WB, IHC, IF/ICC, ELISA

**Species Specificity:**  
human, mouse, rat, pig

**Note-IHC: suggested antigen retrieval with TE buffer pH 9.0; (\*) Alternatively, antigen retrieval may be performed with citrate buffer pH 6.0**

**Positive Controls:**

**WB :** HeLa cells, human brain tissue, human heart tissue, HepG2 cells, K-562 cells, HSC-T6 cells, Pig brain tissue, Mouse brain tissue, rat cerebellum tissue, mouse cerebellum tissue

**IHC :** human liver cancer tissue, mouse brain tissue, mouse liver tissue

**IF/ICC :** HepG2 cells,

## Background Information

Fructose-bisphosphate aldolase C (ALDOC) reversibly cleaves FBP and F1-P to glyceraldehyde 3-phosphate and dihydroxyacetone phosphate and is strongly expressed in mammalian brain together with ALDOA and is also present in the heart and spleen of some species (PMID:9363598). It is involved in glycolysis as an important enzyme. Phospholipase D2 and inositol 1,4,5-triphosphate interact with ALDOC in signal transduction. Meanwhile, the protein expression of ALDOC has been reported to be regulated in brain tumor, hepatomas, and lung cancer (PMID:21548097).

## Storage

**Storage:**  
Store at -20°C. Stable for one year after shipment.  
**Storage Buffer:**  
PBS with 0.02% sodium azide and 50% glycerol, pH7.3  
**Aliquoting is unnecessary for -20°C storage**

For technical support and original validation data for this product please contact:

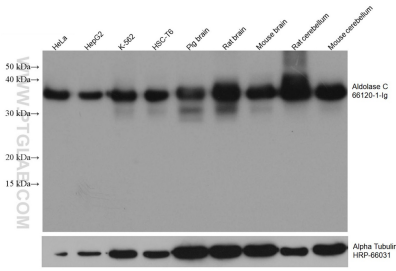
T: 4006900926

E: Proteintech-CN@ptglab.com

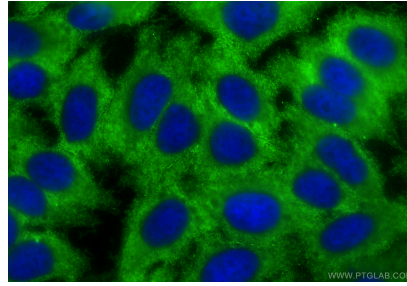
W: ptgcn.com

**This product is exclusively available under Proteintech Group brand and is not available to purchase from any other manufacturer.**

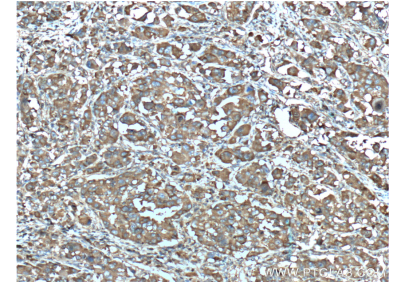
## Selected Validation Data



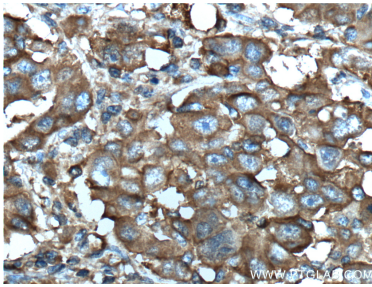
Various lysates were subjected to SDS PAGE followed by western blot with 66120-1-Ig (Aldolase C antibody) at dilution of 1:20000 incubated at room temperature for 1.5 hours. The membrane was stripped and reblotted with HRP-conjugated Alpha Tubulin Monoclonal antibody (HRP-66031) as loading control.



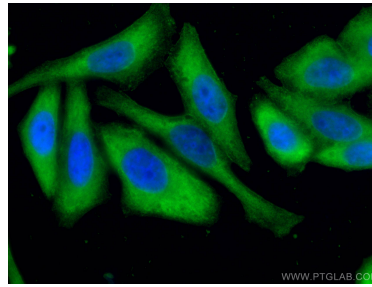
Immunofluorescent analysis of (-20°C Ethanol) fixed HepG2 cells using Aldolase C antibody (66120-1-Ig, Clone: 5H7A5) at dilution of 1:800 and CoraLite®488-Conjugated Goat Anti-Mouse IgG(H+L) (SA00013-1).



Immunohistochemical analysis of paraffin-embedded human liver cancer tissue slide using 66120-1-Ig (Aldolase C antibody at dilution of 1:200 (under 10x lens). Heat mediated antigen retrieval with Tris-EDTA buffer (pH 9.0).



Immunohistochemical analysis of paraffin-embedded human liver cancer tissue slide using 66120-1-Ig (Aldolase C antibody at dilution of 1:200 (under 40x lens). Heat mediated antigen retrieval with Tris-EDTA buffer (pH 9.0).



Immunofluorescent analysis of (-20°C Ethanol) fixed HepG2 cells using Aldolase C antibody (66120-1-Ig, Clone: 5H7A5) at dilution of 1:400 and CoraLite®488-Conjugated AffiniPure Goat Anti-Mouse IgG(H+L).



human heart tissue were subjected to SDS PAGE followed by western blot with 66120-1-Ig (Aldolase C antibody) at dilution of 1:10000 incubated at room temperature for 1.5 hours.