

For Research Use Only

Albumin Monoclonal antibody

Catalog Number: 66051-1-Ig **50 Publications**



Basic Information

| | | |
|--|--|--|
| Catalog Number: 66051-1-Ig | GenBank Accession Number: BC034023 | Purification Method: Protein G purification |
| Concentration: 1000 ug/ml | GeneID (NCBI): 213 | CloneNo.: 4A1C11 |
| Source: Mouse | UNIPROT ID: P02768 | Recommended Dilutions: WB: 1:5000-1:50000 IHC: 1:50-1:500 IF-P: 1:200-1:800 IF/ICC: 1:200-1:800 |
| Isotype: IgG1 | Full Name: albumin | |
| Immunogen Catalog Number: AG9885 | Calculated MW: 609 aa, 69 kDa Observed MW: 66 kDa | |

Applications

| | |
|--|---|
| Tested Applications: WB, IHC, IF/ICC, IF-P, ELISA | Positive Controls: WB : human plasma tissue, human liver tissue IHC : human liver tissue, IF-P : mouse liver tissue, IF/ICC : HepG2 cells, |
| Cited Applications: WB, IHC, IF, IP | |
| Species Specificity: human, rat, pig | |
| Cited Species: human, mouse, rat, pig, rabbit | |
| Note-IHC: suggested antigen retrieval with TE buffer pH 9.0; (*) Alternatively, antigen retrieval may be performed with citrate buffer pH 6.0 | |

Background Information

Albumin is the most abundant protein in blood plasma. Alterations of level of serum albumin are linked to variety of diseases. Albumin is expressed exclusively by well-differentiated hepatocytes, thus anti-albumin has been used to mark hepatocytes. (21388516, 23832071) In addition, glycated serum albumin is also a potential diabetes biomarker.

Notable Publications

| Author | Pubmed ID | Journal | Application |
|--------------|-----------|--------------|-------------|
| Shifeng Tong | 36181861 | Cryobiology | IF |
| Hai Xie | 33104828 | Diabetologia | IF |
| Juan Chen | 30473025 | Life Sci | WB |

Storage

Storage:
Store at -20°C. Stable for one year after shipment.
Storage Buffer:
PBS with 0.02% sodium azide and 50% glycerol, pH7.3
Aliquoting is unnecessary for -20°C storage

For technical support and original validation data for this product please contact:

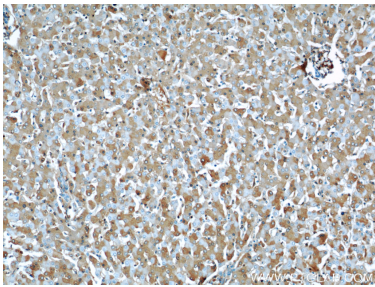
T: 4006900926

E: Proteintech-CN@ptglab.com

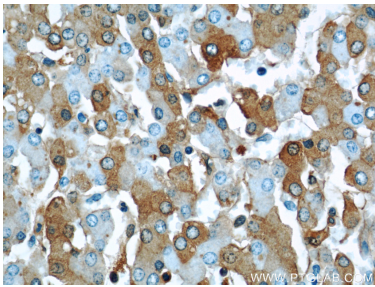
W: ptgcn.com

This product is exclusively available under Proteintech Group brand and is not available to purchase from any other manufacturer.

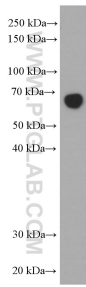
Selected Validation Data



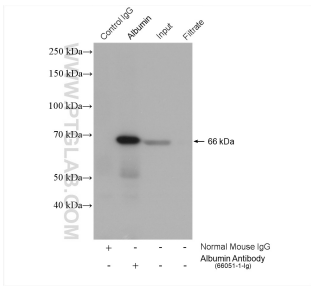
Immunohistochemical analysis of paraffin-embedded human liver using 66051-1-Ig(Alb antibody) at dilution of 1:50 (under 10x lens).



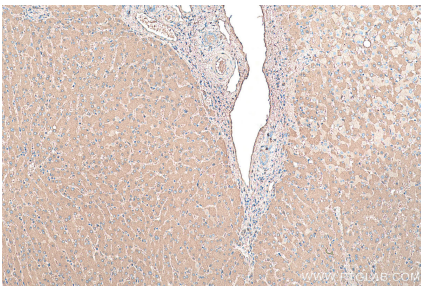
Immunohistochemical analysis of paraffin-embedded human liver using 66051-1-Ig(Alb antibody) at dilution of 1:50 (under 40x lens).



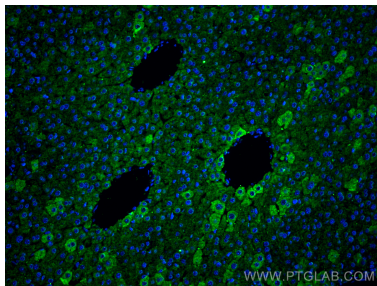
human plasma (diluted 5000 fold) was subjected to SDS PAGE followed by western blot with 66051-1-Ig (Albumin Antibody) at dilution of 1:10000 incubated at room temperature for 1.5 hours.



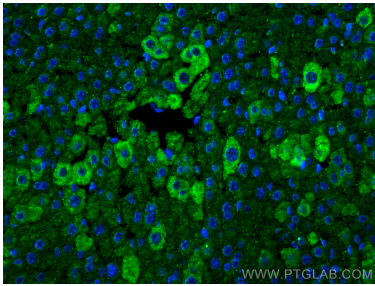
IP result of anti-Albumin (IP:66051-1-Ig, 4ug; Detection:66051-1-Ig 1:1000) with HepG2 cells lysate 1720 ug.



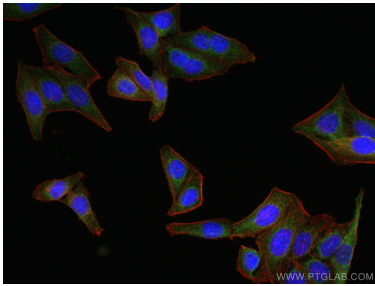
Immunohistochemical analysis of paraffin-embedded human liver tissue slide using 66051-1-Ig (Albumin antibody) at dilution of 1:64000 (under 10x lens). Heat mediated antigen retrieval with Tris-EDTA buffer (pH 9.0).



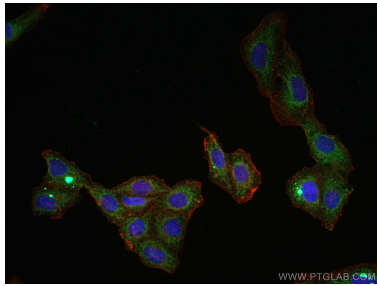
Immunofluorescent analysis of (4% PFA) fixed paraffin-embedded mouse liver tissue using Albumin antibody (66051-1-Ig, Clone: 4A1C11) at dilution of 1:400 and CoraLite®488-Conjugated Goat Anti-Mouse IgG(H+L) (SA00013-1). Heat mediated antigen retrieval with Tris-EDTA buffer (pH 9.0).



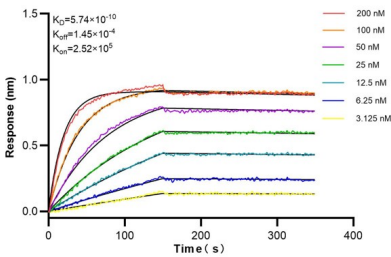
Immunofluorescent analysis of (4% PFA) fixed paraffin-embedded mouse liver tissue using Albumin antibody (66051-1-Ig, Clone: 4A1C11) at dilution of 1:400 and CoraLite®488-Conjugated Goat Anti-Mouse IgG(H+L) (SA00013-1). Heat mediated antigen retrieval with Tris-EDTA buffer (pH 9.0).



Immunofluorescent analysis of (4% PFA) fixed HepG2 cells using Albumin antibody (66051-1-Ig, Clone: 4A1C11) at dilution of 1:400 and CoraLite®488-Conjugated AffiniPure Goat Anti-Mouse IgG(H+L), CL594-Phalloidin (red).



Immunofluorescent analysis of (4% PFA) fixed HepG2 cells using Albumin antibody (66051-1-Ig, Clone: 4A1C11) at dilution of 1:400 and CoraLite®488-Conjugated AffiniPure Goat Anti-Mouse IgG(H+L), CL594-Phalloidin (red).



Biolayer interferometry (BLI) kinetic assays of 66051-1-Ig against Human Albumin were performed. The affinity constant is 0.574 nM