

For Research Use Only

CD2AP Polyclonal antibody

Catalog Number: 24122-1-AP

4 Publications



Basic Information

Catalog Number:

24122-1-AP

Concentration:

650 ug/ml

Source:

Rabbit

Isotype:

IgG

Immunogen Catalog Number:

AG21170

GenBank Accession Number:

BC157901

GeneID (NCBI):

12488

UNIPROT ID:

Q9JLQ0

Full Name:

CD2-associated protein

Calculated MW:

637 aa, 70 kDa

Observed MW:

74 kDa

Purification Method:

Antigen affinity purification

Recommended Dilutions:

WB 1:2000-1:12000

IHC 1:400-1:4000

Applications

Tested Applications:

WB, IHC, ELISA

Cited Applications:

WB, IHC

Species Specificity:

human, mouse

Cited Species:

human, mouse

Note-IHC: suggested antigen retrieval with TE buffer pH 9.0; (*) Alternatively, antigen retrieval may be performed with citrate buffer pH 6.0

Positive Controls:

WB : Jurkat cells, mouse kidney tissue, K-562 cells

IHC : mouse kidney tissue, mouse stomach tissue, human kidney tissue

Background Information

CD2 associated protein (CD2AP, also known as CMS) is a scaffolding molecule that acts as an adapter protein between membrane proteins and the actin cytoskeleton (PMID: 10339567). CD2AP also plays a role in epithelial cell junction formation and affects the pathogenesis of Alzheimer's disease (PMID: 22891260; 31440393). Its mutations are associated with sporadic nephrotic syndrome and focal segmental glomerulosclerosis (FSGS) (PMID: 17713465; 19131354).

Notable Publications

Author	Pubmed ID	Journal	Application
Soulixay Senouthai	30919150	Inflammation	WB
Chunjian Zhang	33296289	Am J Physiol Cell Physiol	WB
Hui Song	34926519	Front Med (Lausanne)	WB

Storage

Storage:

Store at -20°C. Stable for one year after shipment.

Storage Buffer:

PBS with 0.02% sodium azide and 50% glycerol, pH7.3

Aliquoting is unnecessary for -20°C storage

For technical support and original validation data for this product please contact:

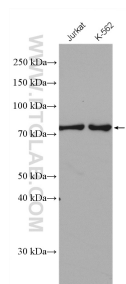
T: 4006900926

E: Proteintech-CN@ptglab.com

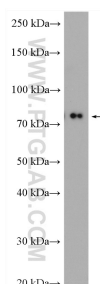
W: ptgcn.com

This product is exclusively available under Proteintech Group brand and is not available to purchase from any other manufacturer.

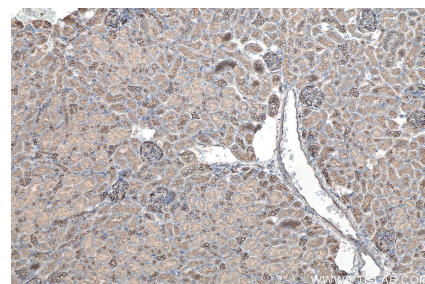
Selected Validation Data



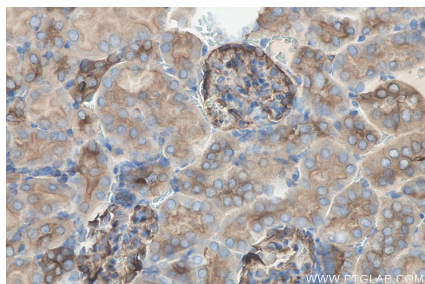
Various lysates were subjected to SDS PAGE followed by western blot with 24122-1-AP (Cd2ap antibody) at dilution of 1:6000 incubated at room temperature for 1.5 hours.



mouse kidney tissue were subjected to SDS PAGE followed by western blot with 24122-1-AP (Cd2ap antibody) at dilution of 1:10000 incubated at room temperature for 1.5 hours.



Immunohistochemical analysis of paraffin-embedded mouse kidney tissue slide using 24122-1-AP (Cd2ap antibody) at dilution of 1:2000 (under 10x lens). Heat mediated antigen retrieval with Tris-EDTA buffer (pH 9.0).



Immunohistochemical analysis of paraffin-embedded mouse kidney tissue slide using 24122-1-AP (Cd2ap antibody) at dilution of 1:2000 (under 40x lens). Heat mediated antigen retrieval with Tris-EDTA buffer (pH 9.0).