

For Research Use Only

C9orf86 Polyclonal antibody

Catalog Number: 20848-1-AP **1 Publications**



Basic Information

Catalog Number: 20848-1-AP	GenBank Accession Number: BC002945	Purification Method: Antigen affinity purification
Size: 350 ug/ml	GeneID (NCBI): 55684	Recommended Dilutions: WB 1:500-1:1000 IHC 1:50-1:500 IF/ICC 1:50-1:500
Source: Rabbit	UNIPROT ID: Q3YEC7	
Isotype: IgG	Full Name: chromosome 9 open reading frame 86	
Immunogen Catalog Number: AG14350	Calculated MW: 729 aa, 80 kDa	
	Observed MW: 125 kDa	

Applications

Tested Applications: WB, IHC, IF/ICC, ELISA	Positive Controls: WB : MDA-MB-453s cells, IHC : human breast cancer tissue, IF/ICC : HeLa cells,
Cited Applications: WB	
Species Specificity: human	
Cited Species: human	
Note-IHC: suggested antigen retrieval with TE buffer pH 9.0; (*) Alternatively, antigen retrieval may be performed with citrate buffer pH 6.0	

Background Information

C9orf86, also known as RBEL1 (Rab-like protein 1), is a novel subfamily of GTPases within the Ras superfamily. It has two splice variants, RBEL1A and RBEL1B. Unlike known Rabs that are mostly cytosolic, RBEL1B predominantly resides in the nucleus, whereas RBEL1A is localized primarily to the cytosol. C9orf86 is overexpressed in the majority of primary breast tumors, and knockdown of C9orf86 in MCF-7 breast cancer cells resulted in cell growth suppression associated with apoptosis [PMID: 23977139]. Western blot analysis revealed that the endogenous RBEL1 migrated at 110-125 kDa, 80 kDa, maybe due to a number of potential O-linked glycosylation sites.[PMID: 17962191]

Notable Publications

Author	Pubmed ID	Journal	Application
Ning Wang	36806253	Cell Death Dis	WB

Storage

Storage:
Store at -20°C. Stable for one year after shipment.
Storage Buffer:
PBS with 0.02% sodium azide and 50% glycerol pH 7.3.
Aliquoting is unnecessary for -20°C storage

For technical support and original validation data for this product please contact:

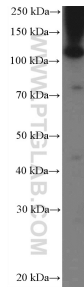
T: 4006900926

E: Proteintech-CN@ptglab.com

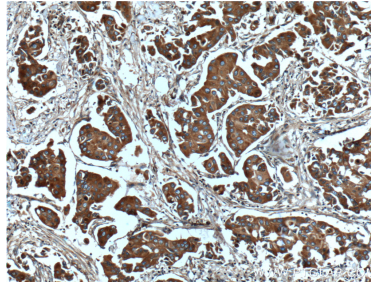
W: ptgcn.com

This product is exclusively available under Proteintech Group brand and is not available to purchase from any other manufacturer.

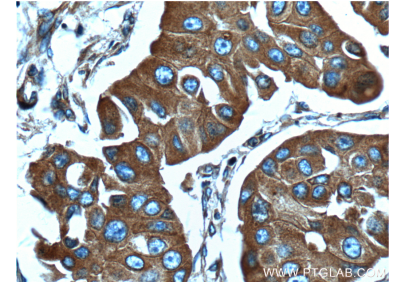
Selected Validation Data



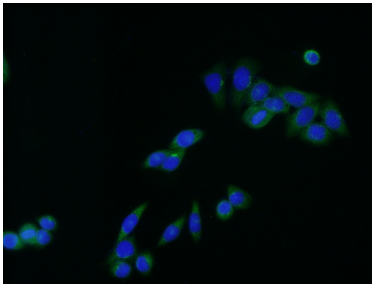
MDA-MB-453s cells were subjected to SDS PAGE followed by western blot with 20848-1-AP (C9orf86 Antibody) at dilution of 1:600 incubated at room temperature for 1.5 hours.



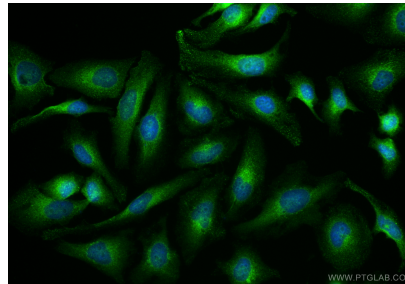
Immunohistochemical analysis of paraffin-embedded human breast cancer tissue slide using 20848-1-AP (C9orf86 Antibody) at dilution of 1:200 (under 10x lens). Heat mediated antigen retrieval with Tris-EDTA buffer (pH 9.0).



Immunohistochemical analysis of paraffin-embedded human breast cancer tissue slide using 20848-1-AP (C9orf86 Antibody) at dilution of 1:200 (under 40x lens). Heat mediated antigen retrieval with Tris-EDTA buffer (pH 9.0).



Immunofluorescent analysis of (-20°C Ethanol) fixed HeLa cells using 20848-1-AP (C9orf86 antibody) at dilution of 1:50 and Alexa Fluor 488-conjugated AffiniPure Goat Anti-Rabbit IgG(H+L).



Immunofluorescent analysis of (4% PFA) fixed HeLa cells using C9orf86 antibody (20848-1-AP) at dilution of 1:200 and CoraLite@488-Conjugated Goat Anti-Rabbit IgG(H+L) (SA00013-2).