

For Research Use Only

# CCKBR-specific Polyclonal antibody



Catalog Number: 16549-1-AP

2 Publications

## Basic Information

**Catalog Number:**

16549-1-AP

**Size:**

300 µg/ml

**Source:**

Rabbit

**Isotype:**

IgG

**GenBank Accession Number:**

NM\_176875

**GeneID (NCBI):**

887

**UNIPROT ID:**

P32239

**Full Name:**

cholecystokinin B receptor

**Calculated MW:**

56 kDa

**Observed MW:**

64 kDa, 50 kDa

**Purification Method:**

Antigen affinity purification

**Recommended Dilutions:**

WB 1:500-1:1000

IF/ICC 1:10-1:100

## Applications

**Tested Applications:**

WB, IF/ICC, ELISA

**Cited Applications:**

WB, IHC, IF

**Species Specificity:**

human

**Cited Species:**

human

**Positive Controls:**

WB : BxPC-3 cells, human stomach tissue, SGC-7901 cells

IF/ICC : BxPC-3 cells,

## Background Information

The cholecystokinin B receptor (CCKBR) is a G-protein coupled receptor for gastrin and cholecystokinin (CCK), regulatory peptides of the brain and gastrointestinal tract. This protein is a type B gastrin receptor, which has a high affinity for both sulfated and nonsulfated CCK analogs and is found principally in the central nervous system and the gastrointestinal tract. A misspliced transcript variant including an intron has been observed in cells from colorectal and pancreatic tumors.

## Notable Publications

Author	Pubmed ID	Journal	Application
Jiang Chang	33998814	Mol Pharm	WB,IHC
Jiang Chang	32488497	J Cancer Res Clin Oncol	IF

## Storage

**Storage:**

Store at -20°C. Stable for one year after shipment.

**Storage Buffer:**

PBS with 0.02% sodium azide and 50% glycerol pH 7.3.

Aliquoting is unnecessary for -20°C storage

For technical support and original validation data for this product please contact:

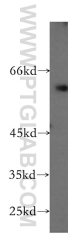
T: 4006900926

E: Proteintech-CN@ptglab.com

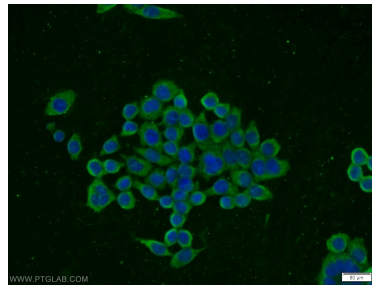
W: ptgcn.com

**This product is exclusively available under Proteintech Group brand and is not available to purchase from any other manufacturer.**

## Selected Validation Data



BxPC-3 cells were subjected to SDS PAGE followed by western blot with 16549-1-AP (CCKBR-specific antibody) at dilution of 1:300 incubated at room temperature for 1.5 hours.



Immunofluorescent analysis of BxPC-3 cells using 16549-1-AP (CCKBR-specific antibody) at dilution of 1:25 and Alexa Fluor 488-conjugated AffiniPure Goat Anti-Rabbit IgG(H+L).