

For Research Use Only

Claudin 3 Polyclonal antibody

Catalog Number: 16456-1-AP

48 Publications



Basic Information

Catalog Number:

16456-1-AP

Concentration:

600 µg/ml

Source:

Rabbit

Isotype:

IgG

Immunogen Catalog Number:

AG9411

GenBank Accession Number:

BC016056

GeneID (NCBI):

1365

UNIPROT ID:

O15551

Full Name:

claudin 3

Calculated MW:

220 aa, 23 kDa

Observed MW:

20-24 kDa

Purification Method:

Antigen affinity purification

Recommended Dilutions:

IP: 0.5-4.0 µg for 1.0-3.0 mg of total protein lysate

IHC: 1:50-1:500

Applications

Tested Applications:

IP, IHC, ELISA

Cited Applications:

IHC, IF

Species Specificity:

human, mouse, rat

Cited Species:

human, mouse, rat, pig, sheep

Note-IHC: suggested antigen retrieval with TE buffer pH 9.0; (*) Alternatively, antigen retrieval may be performed with citrate buffer pH 6.0

Positive Controls:

IP: mouse large intestine tissue,

IHC: human breast cancer tissue, mouse colon tissue

Background Information

Claudins are a family of proteins that are the most important components of the tight junctions, where they establish the paracellular barrier that controls the flow of molecules in the intercellular space between the cells of an epithelium. 23 claudins have been identified. They are small (20-27 kilodalton (kDa)) proteins with very similar structure. They have four transmembrane domains, with the N-terminus and the C-terminus in the cytoplasm.

Notable Publications

Author	Pubmed ID	Journal	Application
Xin Ran	36040330	J Agric Food Chem	
Jie Cai	31520958	Environ Int	IHC
Yuya Tsurudome	36224445	Mol Biol Rep	

Storage

Storage:

Store at -20°C. Stable for one year after shipment.

Storage Buffer:

PBS with 0.02% sodium azide and 50% glycerol, pH7.3

Aliquoting is unnecessary for -20°C storage

For technical support and original validation data for this product please contact:

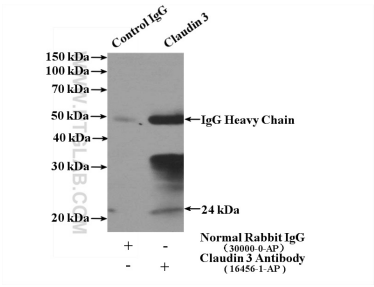
T: 4006900926

E: Proteintech-CN@ptglab.com

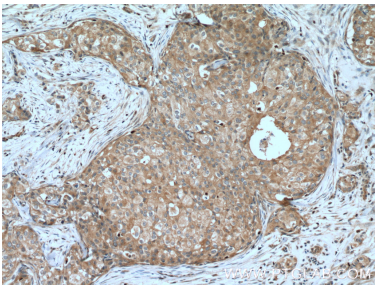
W: ptgcn.com

This product is exclusively available under Proteintech Group brand and is not available to purchase from any other manufacturer.

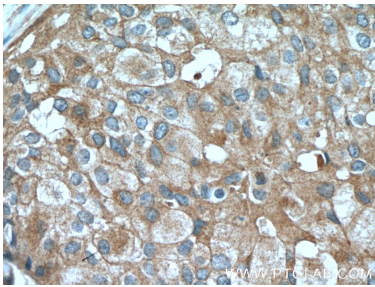
Selected Validation Data



IP result of anti-Claudin 3 (IP:16456-1-AP, 4ug; Detection:16456-1-AP 1:300) with mouse large intestine tissue lysate 3200ug.



Immunohistochemical analysis of paraffin-embedded human breast cancer tissue slide using 16456-1-AP (Claudin 3 Antibody) at dilution of 1:200 (under 10x lens). Heat mediated antigen retrieval with Tris-EDTA buffer (pH 9.0).



Immunohistochemical analysis of paraffin-embedded human breast cancer tissue slide using 16456-1-AP (Claudin 3 Antibody) at dilution of 1:200 (under 40x lens). Heat mediated antigen retrieval with Tris-EDTA buffer (pH 9.0).