

Cytokeratin 19 Polyclonal antibody

Catalog Number: 14965-1-AP

Featured Product

17 Publications

Basic Information

Catalog Number:

14965-1-AP

Concentration:

1000 ug/ml

Source:

Rabbit

Isotype:

IgG

Immunogen Catalog Number:

AG6830

GenBank Accession Number:

BC002539

GeneID (NCBI):

3880

UNIPROT ID:

P08727

Full Name:

keratin 19

Calculated MW:

44 kDa

Observed MW:

40 kDa, 46 kDa

Purification Method:

Antigen affinity purification

Recommended Dilutions:

WB: 1:500-1:3000

IHC: 1:150-1:600

IF-Fro: 1:50-1:500

IF/ICC: 1:200-1:800

FC (Intra): 0.40 ug per 10⁶ cells in a 100 µl suspension

Applications

Tested Applications:

WB, IHC, IF/ICC, IF-Fro, ELISA

Cited Applications:

WB, IHC, IF

Species Specificity:

human, mouse, rat

Cited Species:

human, mouse, rat, monkey

Note-IHC: suggested antigen retrieval with TE buffer pH 9.0; (*) Alternatively, antigen retrieval may be performed with citrate buffer pH 6.0

Positive Controls:

WB: MCF7 cells, HeLa cells, HepG2 cells, BxPC-3 cells

IHC: human colon tissue, human liver cancer tissue, human cervical cancer tissue, human brown disease, mouse colon tissue, rat colon tissue, human lung cancer tissue

IF-Fro: mouse liver tissue,

IF/ICC: HeLa cells, A431 cells

FC (Intra): MCF-7 cells,

Background Information

Cytokeratin 19 (CK19 or KRT19) is a type I (acidic) cytokeratin. It is an intermediate filament protein providing structural rigidity and multipurpose scaffolds in epithelial cells. CK19 is often overexpressed in various cancers (e.g., hepatocellular carcinoma [HCC], pancreatic adenocarcinoma, lung cancer) and serves as a biomarker for hepatic progenitor cells (HPCs) associated with poor prognosis in HCC patients. Additionally, CK19 expression is common in pancreatic and gastrointestinal adenocarcinomas and has been studied as a potential diagnostic and prognostic marker for pancreatic neuroendocrine tumors (PNETs), where positive CK19 expression correlates with poor prognosis. Serum CK19 fragments (e.g., CYFRA 21-1, CK19-2G2) have been investigated as tumor markers for lung and breast cancer, with preoperative levels associated with metastasis and survival. This antibody, generated against full length KRT19 protein, also recognizes KRT17, another type I keratin homologous to KRT19.

Notable Publications

Author	Pubmed ID	Journal	Application
Masahiko Itoh	33184034	Biochim Biophys Acta Mol Basis Dis	IF
Nachiket Vartak	26610202	Hepatology	IF
Zhiqiang Tian	36403057	Cancer Cell Int	IHC

Storage

Storage:

Store at -20°C. Stable for one year after shipment.

Storage Buffer:

PBS with 0.02% sodium azide and 50% glycerol, pH7.3

Aliquoting is unnecessary for -20°C storage

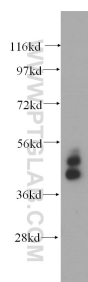
For technical support and original validation data for this product please contact:

T: 4006900926

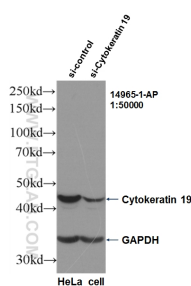
E: Proteintech-CN@ptglab.comW: ptgcn.com

This product is exclusively available under Proteintech Group brand and is not available to purchase from any other manufacturer.

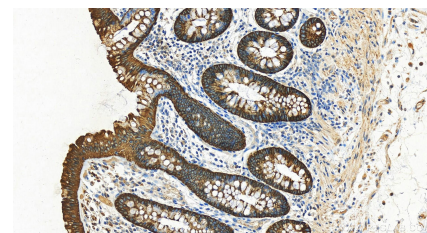
Selected Validation Data



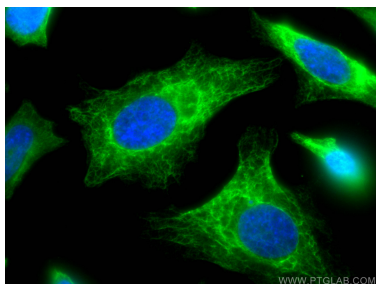
MCF7 cells were subjected to SDS PAGE followed by western blot with 14965-1-AP (Cytokeratin 19 antibody) at dilution of 1:500 incubated at room temperature for 1.5 hours.



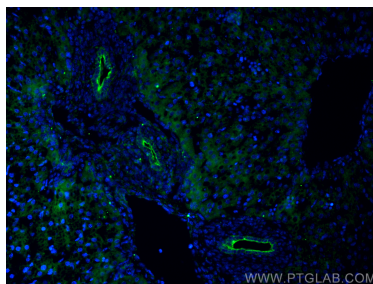
WB result of KRT19 antibody (14965-1-AP, 1:50,000) with si-Control and si-KRT19 transfected HeLa cells.



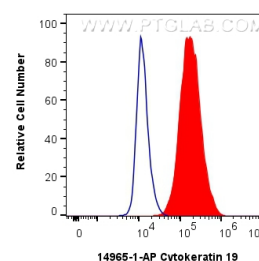
Immunohistochemical analysis of paraffin-embedded human normal colon slide using 14965-1-AP (Cytokeratin 19 antibody) at dilution of 1:300 (under 20x lens). Heat mediated antigen retrieval with Tris-EDTA buffer (pH 9.0).



Immunofluorescent analysis of (4% PFA) fixed HeLa cells using Cytokeratin 19 antibody (14965-1-AP) at dilution of 1:400 and CoraLite®488-Conjugated AffiniPure Goat Anti-Rabbit IgG(H+L).



Immunofluorescent analysis of (4% PFA) fixed frozen OCT-embedded mouse liver tissue using Cytokeratin 19 antibody (14965-1-AP) at dilution of 1:200 and CoraLite®488-Conjugated Goat Anti-Rabbit IgG(H+L) (SA00013-2).



1×10^6 MCF-7 cells were intracellularly stained with 0.4 μ g Cytokeratin 19 Polyclonal antibody (14965-1-AP) and CoraLite®488-Conjugated AffiniPure Goat Anti-Rabbit IgG(H+L) (SA00013-2) (red), or 0.4 μ g Rabbit IgG control Rabbit PolyAb (30000-0-AP) (blue). Cells were fixed with 4% PFA and permeabilized with Flow Cytometry Perm Buffer (PF00011-C).