

For Research Use Only

AADACL1 Polyclonal antibody

Catalog Number: 14021-1-AP **5 Publications**



Basic Information

Catalog Number: 14021-1-AP	GenBank Accession Number: BC047588	Purification Method: Antigen affinity purification
Size: 240 µg/ml	GeneID (NCBI): 57552	Recommended Dilutions: WB 1:1000-1:4000
Source: Rabbit	UNIPROT ID: Q6PIU2	IP 0.5-4.0 µg for 1.0-3.0 mg of total protein lysate
Isotype: IgG	Full Name: arylacetamide deacetylase-like 1	IHC 1:20-1:200
Immunogen Catalog Number: AG5136	Calculated MW: 46 kDa	IF/ICC 1:10-1:100
	Observed MW: 40-50 kDa	

Applications

Tested Applications: WB, IHC, IF/ICC, IP, ELISA	Positive Controls: WB : PC-3 cells, IP : COLO 320 cells, IHC : human brain tissue, human kidney tissue, human lung tissue, human ovary tissue, human skin tissue, human spleen tissue IF/ICC : COLO 320 cells,
Cited Applications: WB, IHC, IF, IP	
Species Specificity: human, mouse, rat	
Cited Species: human, mouse, rat	
Note-IHC: suggested antigen retrieval with TE buffer pH 9.0; (*) Alternatively, antigen retrieval may be performed with citrate buffer pH 6.0	

Background Information

AADACL1(Arylacetamide deacetylase-like 1) is also named as NCEH1, KIAA1363 and belongs to the 'GDxG' lipolytic enzyme family. The transmembrane enzyme, AADACL1, controls the production of the monoalkylglycerol ether (MAGE) class of NELS in cancer cells and acts as a 2-acetyl MAGE hydrolase and is likely the principal source for this activity in tumor cells(PMID:21513884). The full length protein has three glycosylation sites and can be N-glycosylated(PMID:19159218). It has 3 isoforms produced by alternative splicing.

Notable Publications

Author	Pubmed ID	Journal	Application
Jingyi Duan	32240813	J Proteomics	WB
Junyi Zhang	39052058	Naunyn Schmiedebergs Arch Pharmacol	WB
Hai-Jian Sun	38664801	Cardiovasc Diabetol	IP,IF

Storage

Storage:
Store at -20°C. Stable for one year after shipment.
Storage Buffer:
PBS with 0.02% sodium azide and 50% glycerol pH 7.3.
Aliquoting is unnecessary for -20°C storage

For technical support and original validation data for this product please contact:

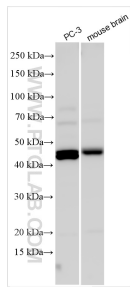
T: 4006900926

E: Proteintech-CN@ptglab.com

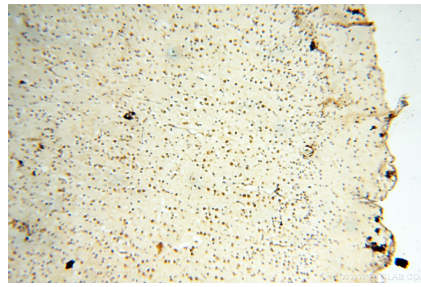
W: ptgcn.com

This product is exclusively available under Proteintech Group brand and is not available to purchase from any other manufacturer.

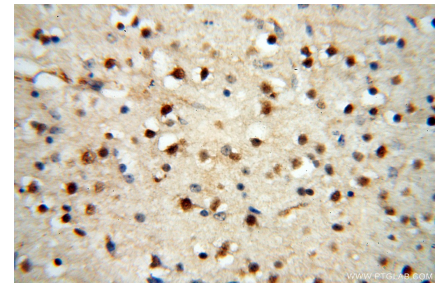
Selected Validation Data



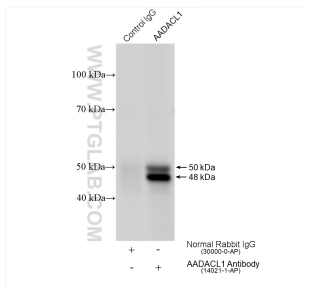
Various lysates were subjected to SDS PAGE followed by western blot with 14021-1-AP (AADACL1 antibody) at dilution of 1:2000 incubated at room temperature for 1.5 hours.



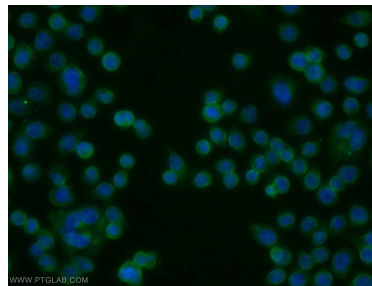
Immunohistochemical analysis of paraffin-embedded human brain using 14021-1-AP (AADACL1 antibody) at dilution of 1:50 (under 10x lens).



Immunohistochemical analysis of paraffin-embedded human brain using 14021-1-AP (AADACL1 antibody) at dilution of 1:50 (under 40x lens).



IP result of anti-AADACL1 (IP:14021-1-AP, 4ug; Detection:14021-1-AP 1:500) with COLO 320 cells lysate 1320 ug.



Immunofluorescent analysis of COLO 320 cells using 14021-1-AP (AADACL1 antibody) at dilution of 1:25 and Alexa Fluor 488-conjugated Goat Anti-Rabbit IgG(H+L).