

For Research Use Only

14-3-3 Sigma Polyclonal antibody

Catalog Number:10622-1-AP

3 Publications



Basic Information

Catalog Number:

10622-1-AP

Size:

650 ug/ml

Source:

Rabbit

Isotype:

IgG

Immunogen Catalog Number:

AG0973

GenBank Accession Number:

BC002995

GeneID (NCBI):

2810

UNIPROT ID:

P31947

Full Name:

stratifin

Calculated MW:

28 kDa

Observed MW:

28-30 kDa

Purification Method:

Antigen affinity purification

Recommended Dilutions:

WB 1:5000-1:50000

IHC 1:250-1:1000

Applications

Tested Applications:

WB, IHC, ELISA

Cited Applications:

WB, IHC

Species Specificity:

human, mouse

Cited Species:

human, mouse

Note-IHC: suggested antigen retrieval with TE buffer pH 9.0; (*) Alternatively, antigen retrieval may be performed with citrate buffer pH 6.0

Positive Controls:

WB : A431 cells, A549 cells, HeLa cells, U2OS cells

IHC : mouse skin tissue, human bowen disease

Background Information

14-3-3 Sigma is a member 14-3-3 family of highly conserved proteins participating in diverse cellular processes including cell cycle progression. It is exclusively present in various epithelial cells, and alternatively named as human epithelial marker (HEM), or stratifin. Alteration of its expression has been linked to cancer.

Notable Publications

Author	Pubmed ID	Journal	Application
Qihang Peng	39022804	J Proteome Res	WB,IHC
Yuliang Ren	37922793	Phytomedicine	WB
Thomas J Nelson	37221295	Sci Rep	WB

Storage

Storage:

Store at -20°C. Stable for one year after shipment.

Storage Buffer:

PBS with 0.02% sodium azide and 50% glycerol pH 7.3.

Aliquoting is unnecessary for -20°C storage

For technical support and original validation data for this product please contact:

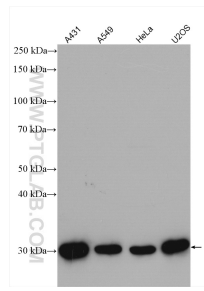
T: 4006900926

E: Proteintech-CN@ptglab.com

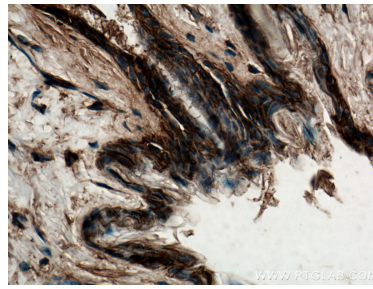
W: ptgcn.com

This product is exclusively available under Proteintech Group brand and is not available to purchase from any other manufacturer.

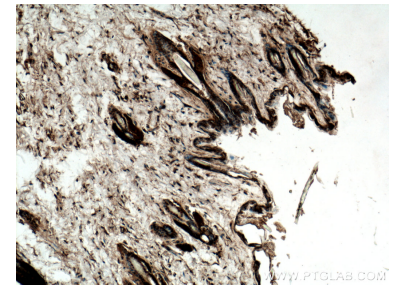
Selected Validation Data



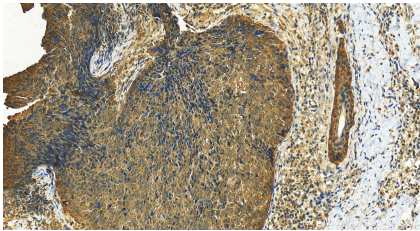
Various lysates were subjected to SDS PAGE followed by western blot with 10622-1-AP (14-3-3 sigma antibody) at dilution of 1:10000 incubated at room temperature for 1.5 hours.



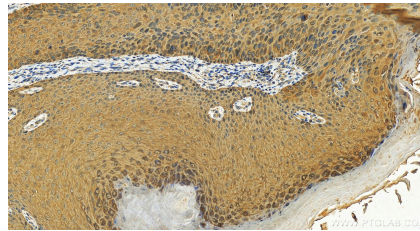
Immunohistochemical analysis of paraffin-embedded mouse skin tissue slide using 10622-1-AP (14-3-3 sigma antibody) at dilution of 1:500 (under 40x lens).



Immunohistochemical analysis of paraffin-embedded mouse skin tissue slide using 10622-1-AP (14-3-3 sigma antibody) at dilution of 1:500 (under 10x lens).



Immunohistochemical analysis of paraffin-embedded human bowen disease slide using 10622-1-AP (14-3-3 Sigma antibody) at dilution of 1:2000 (under 20x lens). Heat mediated antigen retrieval with Tris-EDTA buffer (pH 9.0).



Immunohistochemical analysis of paraffin-embedded human bowen disease slide using 10622-1-AP (14-3-3 Sigma antibody) at dilution of 1:2000 (under 20x lens). Heat mediated antigen retrieval with Tris-EDTA buffer (pH 9.0).